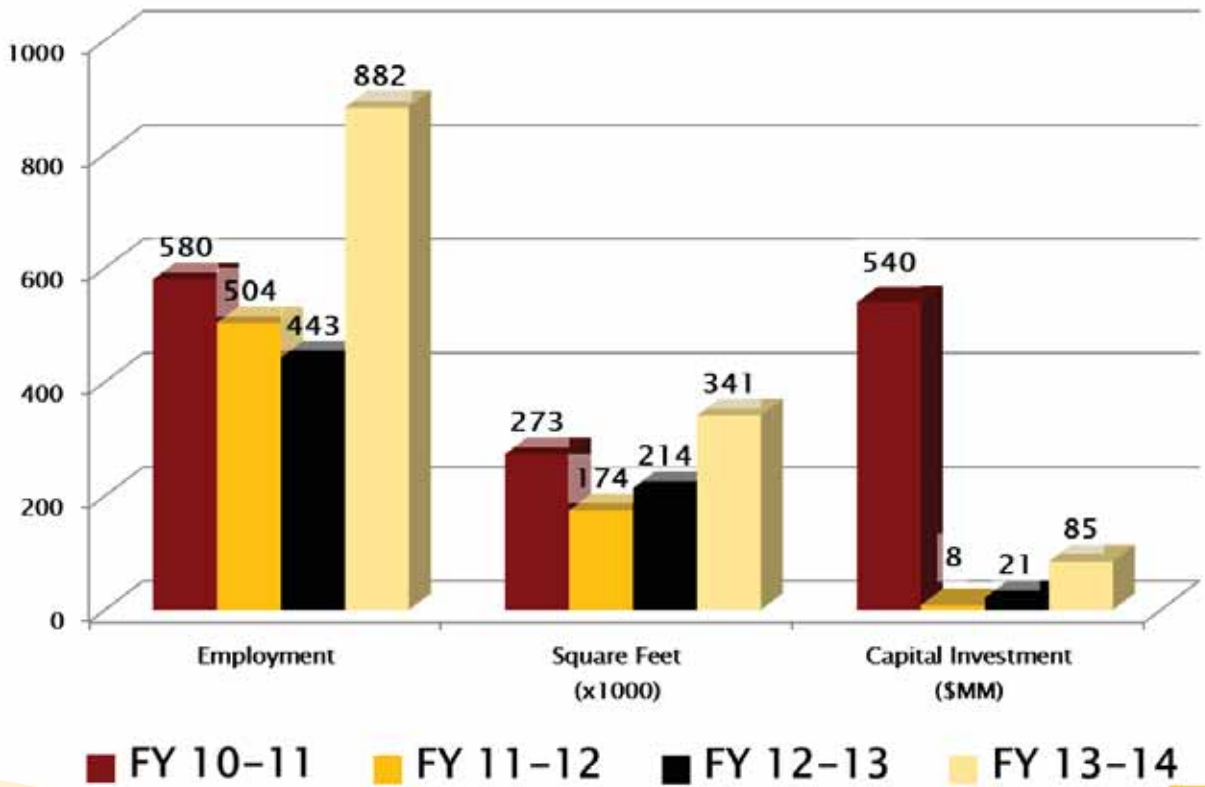




Annual Report Update

FY 2013- '14

882 - New Jobs



HOUSEHOLD SPENDING

3 YEAR

IMPACT

\$145,436,096

Strong Economic Based Job Growth

3-YEAR TOTALS:
FY12-FY14

**All numbers are direct impacts from full operation of projects*

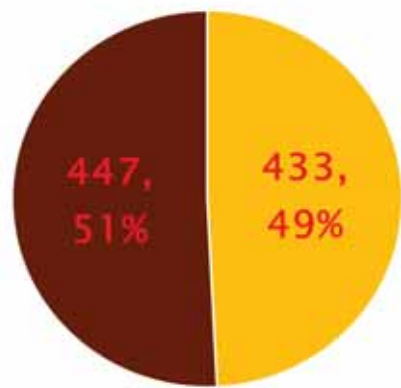
NEW JOBS:	1,829	NEW PAYROLL GENERATED:	\$50,805,662
SITE VISITS:	69	DONA ANA COUNTY BUSINESSES MET FOR RETENTION OR EXPANSION	
CAPITAL INVESTMENT:	\$114,232,950		
COMPLETED PROJECTS:	27		82



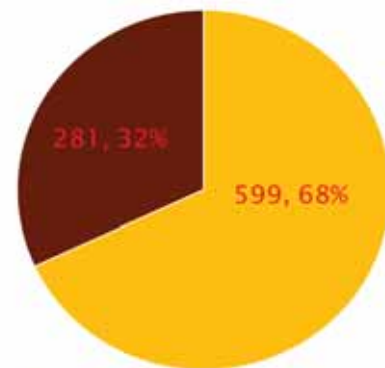
Project Profiles

FY 2013-'14

Employment by Location & Strategy

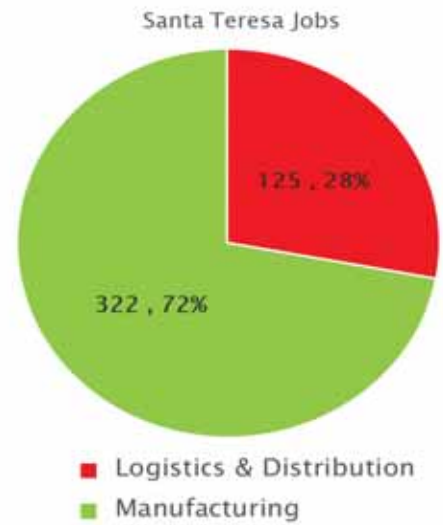
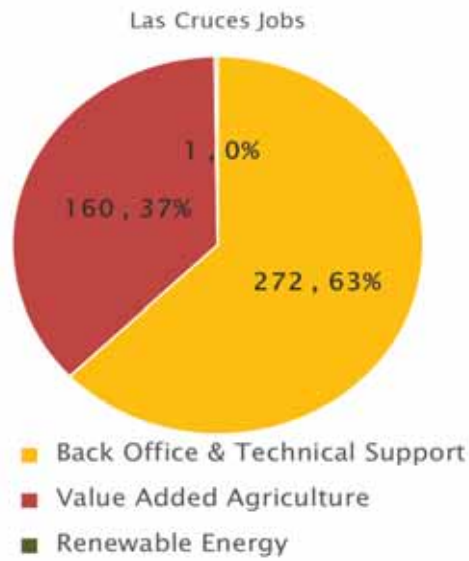


■ Las Cruces ■ Santa Teresa

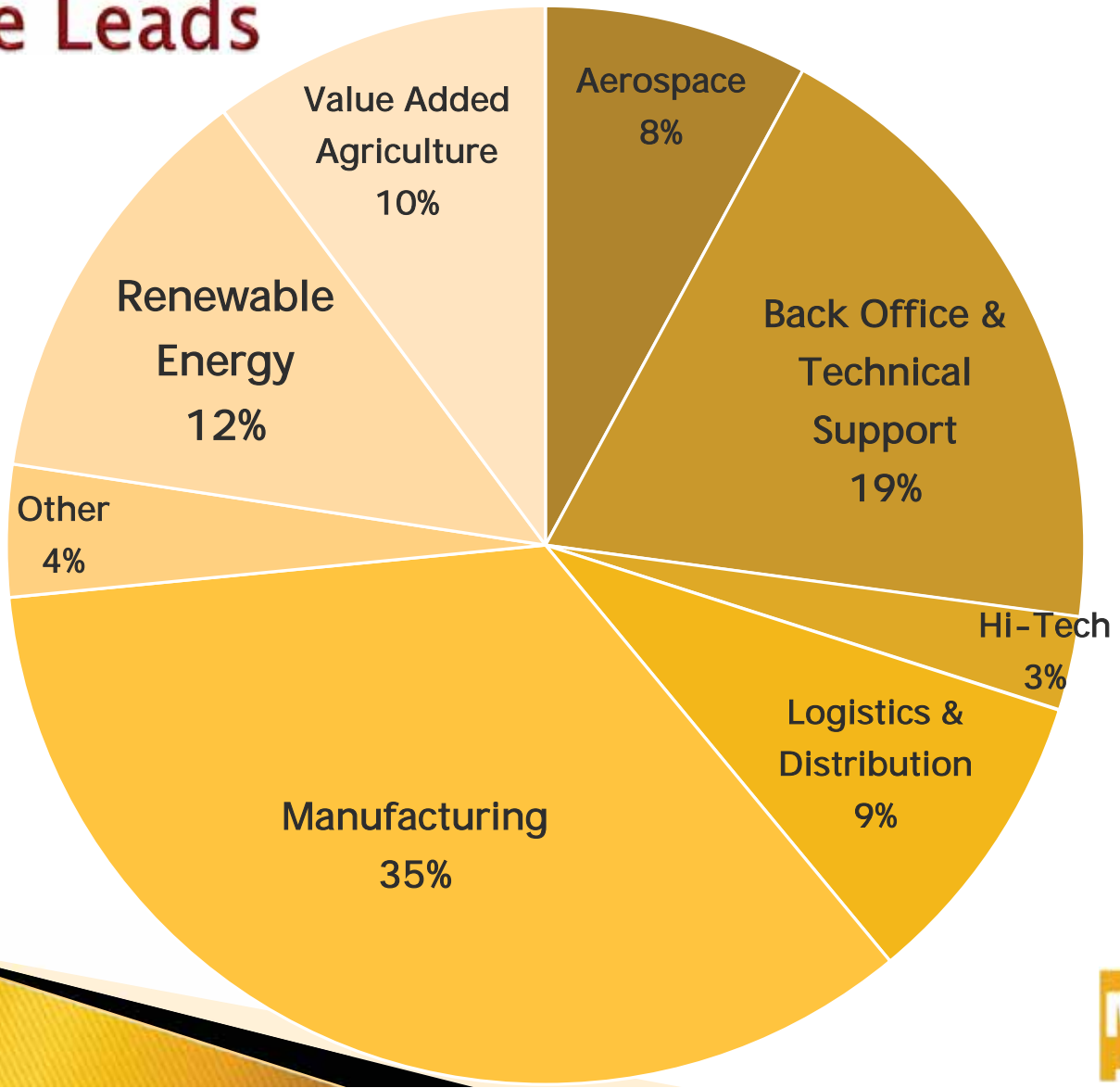


■ Location ■ Expansion

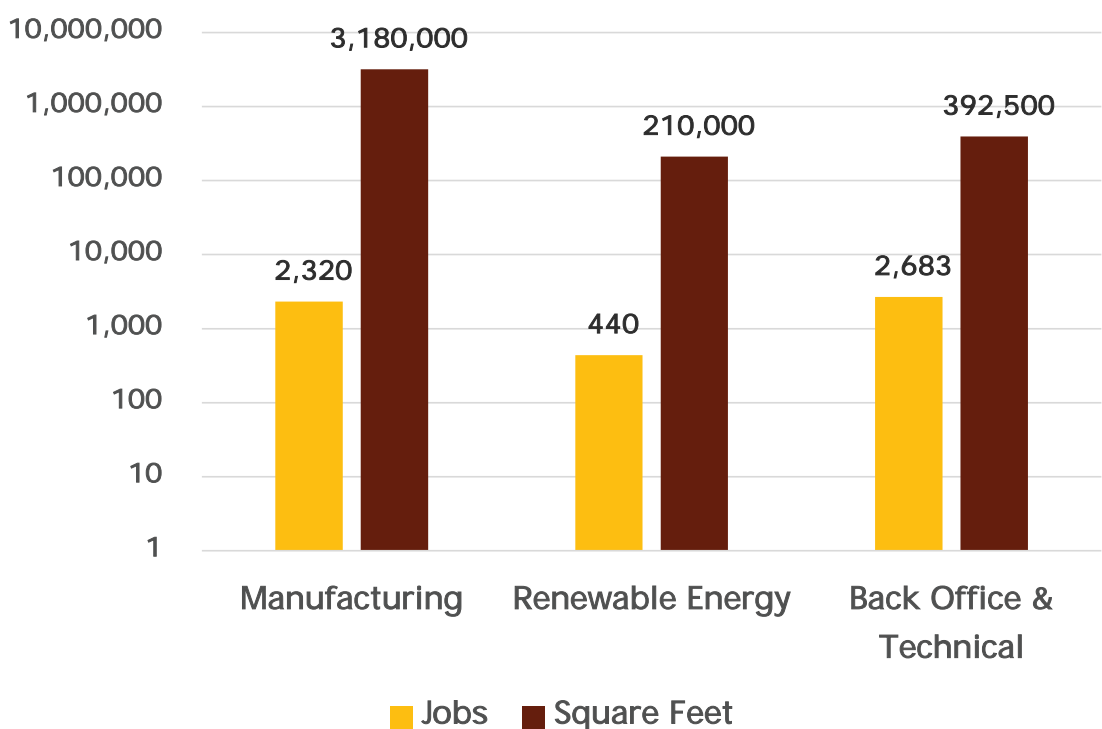
Employment by Industry



Active Leads



Lost Opportunities



- ### Top Reasons For Not Locating
- Facility Availability
 - Utility Costs
 - Labor Market Skills
 - Competitive Incentives

Total Jobs
5,443



where

do we go

from

here?

Projections



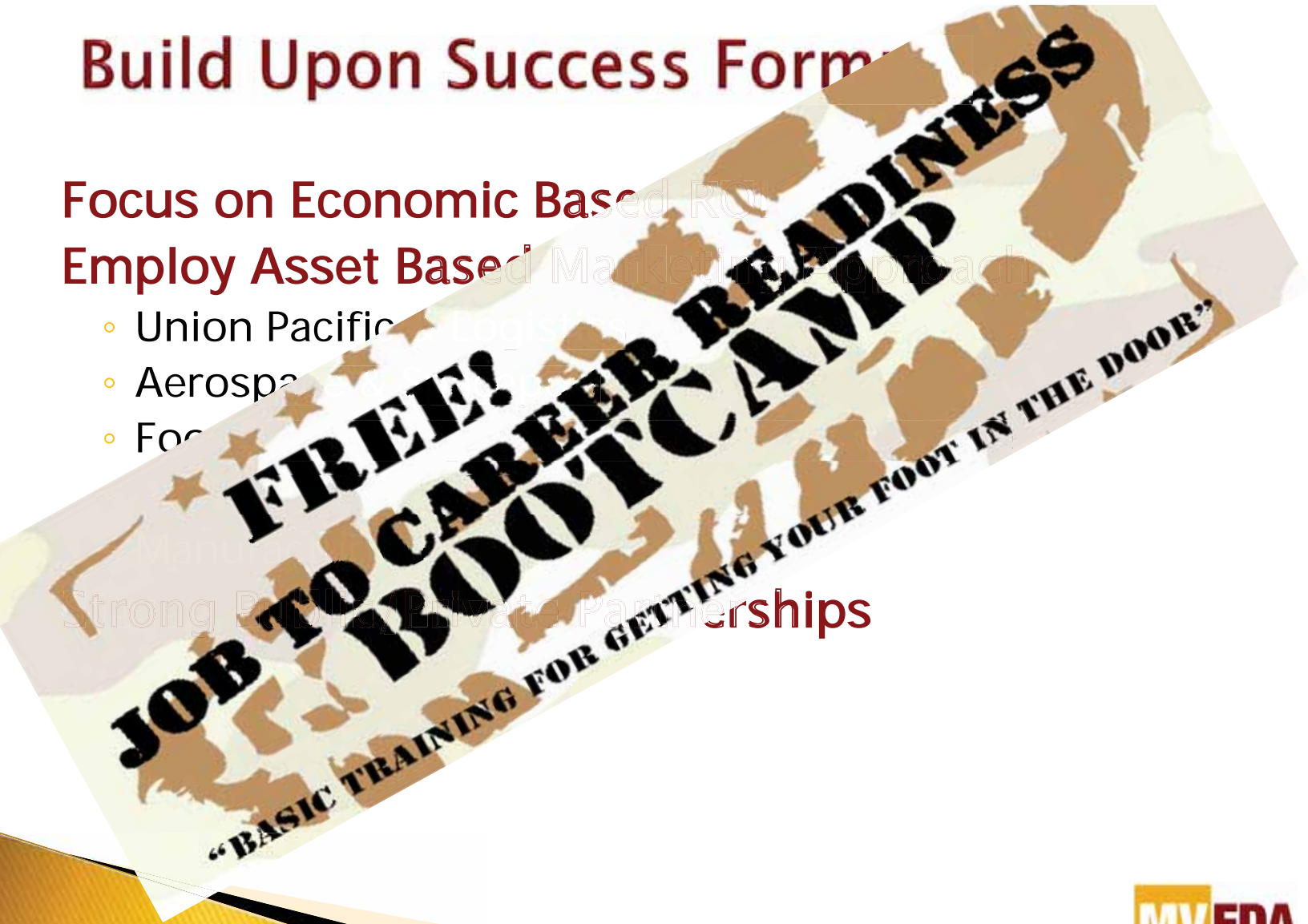
Build Upon Success Form

Focus on Economic Based RCU

Employ Asset Based Market Approach

- Union Pacific
- Aerospace
- Food

Strong Public-Private Partnerships



Grow Our Competitive Landscape

JOBS COUNCIL INITIATIVES & SANTA FE

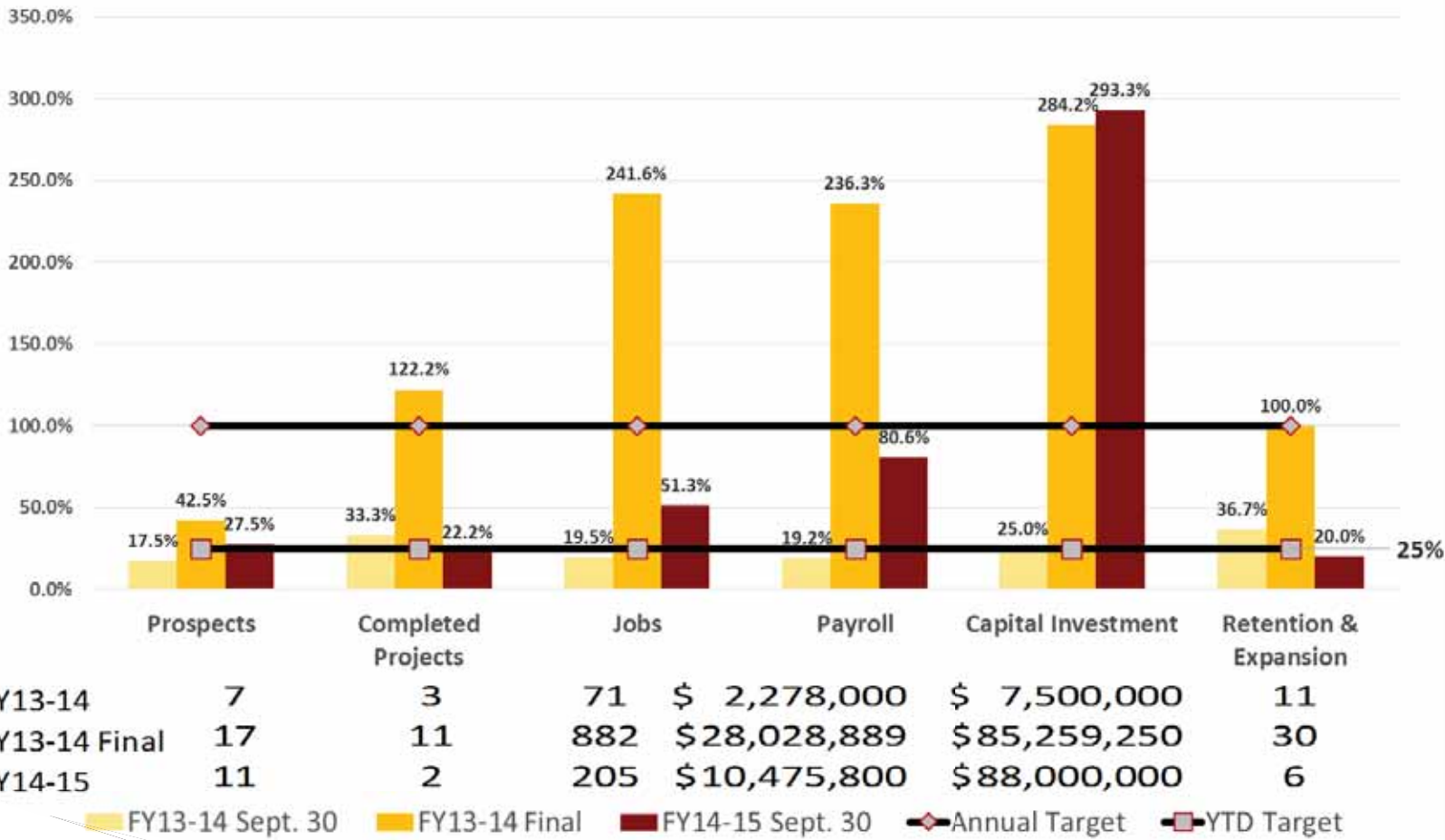
- ▶ Increase LEDA
- ▶ Increase JTIP
- ▶ Increase NM Partnership
- ▶ Economic Development Rates
- ▶ Stop the Rhetoric and Protect what we have

GROW LOCAL COMPETITIVENESS

- ▶ Local Incentives/Economic Development Funds
- ▶ Facility/Spec Space (Public/Private Partnerships)
- ▶ Workforce attraction

MVEDA Dashboard

FY13-14 & FY14-15 Progress to Date vs Annual Goals
as of September 30



FY13-14	7	3	71	\$ 2,278,000	\$ 7,500,000	11
FY13-14 Final	17	11	882	\$28,028,889	\$85,259,250	30
FY14-15	11	2	205	\$10,475,800	\$88,000,000	6

■ FY13-14 Sept. 30
 ■ FY13-14 Final
 ■ FY14-15 Sept. 30
 ◆ Annual Target
 ■ YTD Target



THANK YOU MVEDA PARTNERS!

882 NEW JOBS
IN FY'14

RETURN ON INVESTMENT

FOR EVERY \$

¹Based on investment by Private-sector partners.
²Based on investment by Public-sector partners.
³Based on investment by Education partners.

INVESTED INTO
MVEDA

\$788IN NEW 3-YEAR
HOUSEHOLD SPENDING

\$389IN NEW
3-YEAR ANNUAL PAYROLL¹

\$33IN NEW TAXES²

\$34IN NEW
EDUCATION-RELATED TAXES³

... **WERE CREATED.**