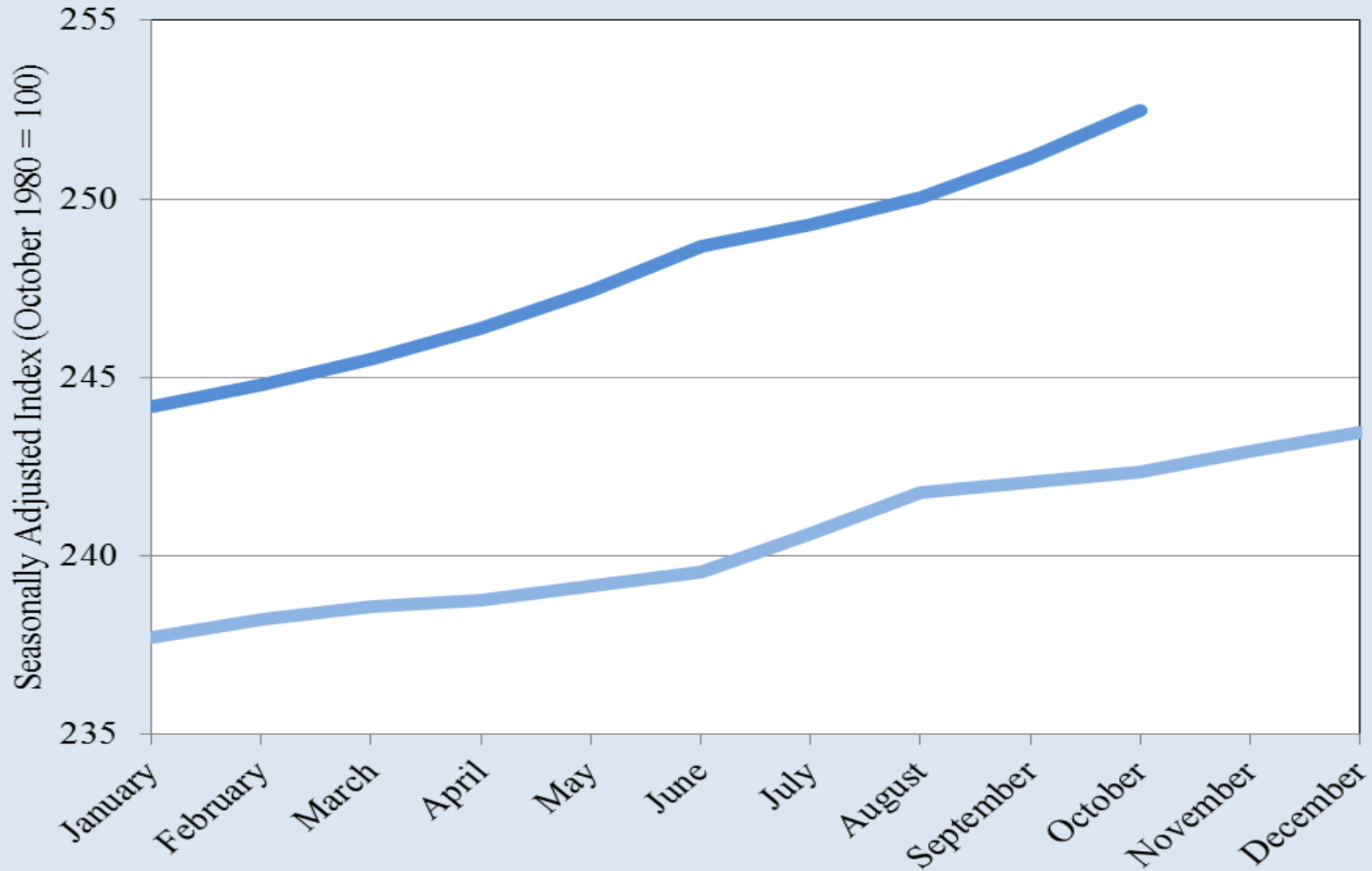


# **Borderplex Business Barometer**

Border Region Modeling Project  
Department of Economics and Finance  
The University of Texas at El Paso

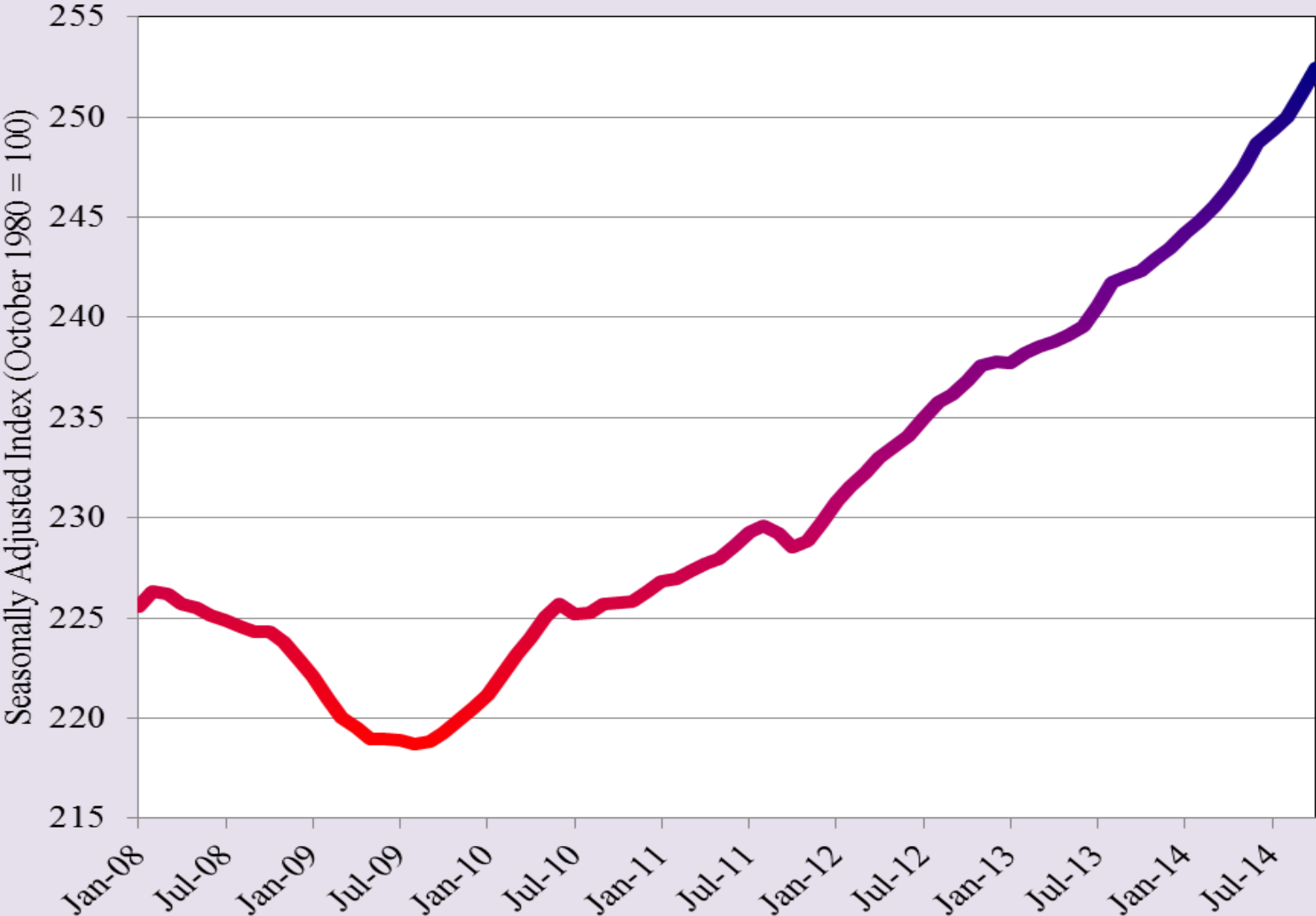
## Metro Business-Cycle Index for El Paso

2013 2014



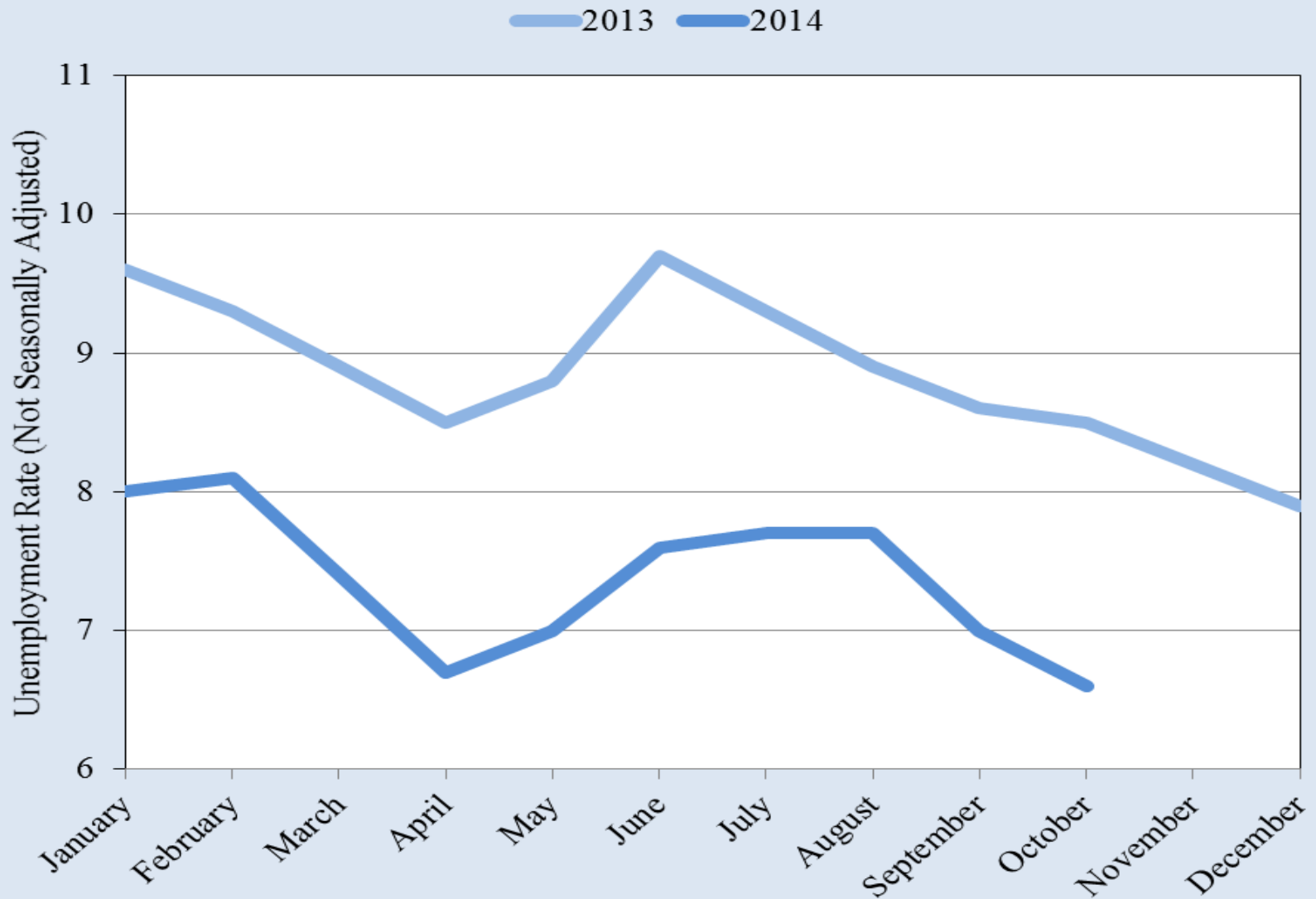
Source: Federal Reserve Bank of Dallas

# Metro Business-Cycle Index for El Paso



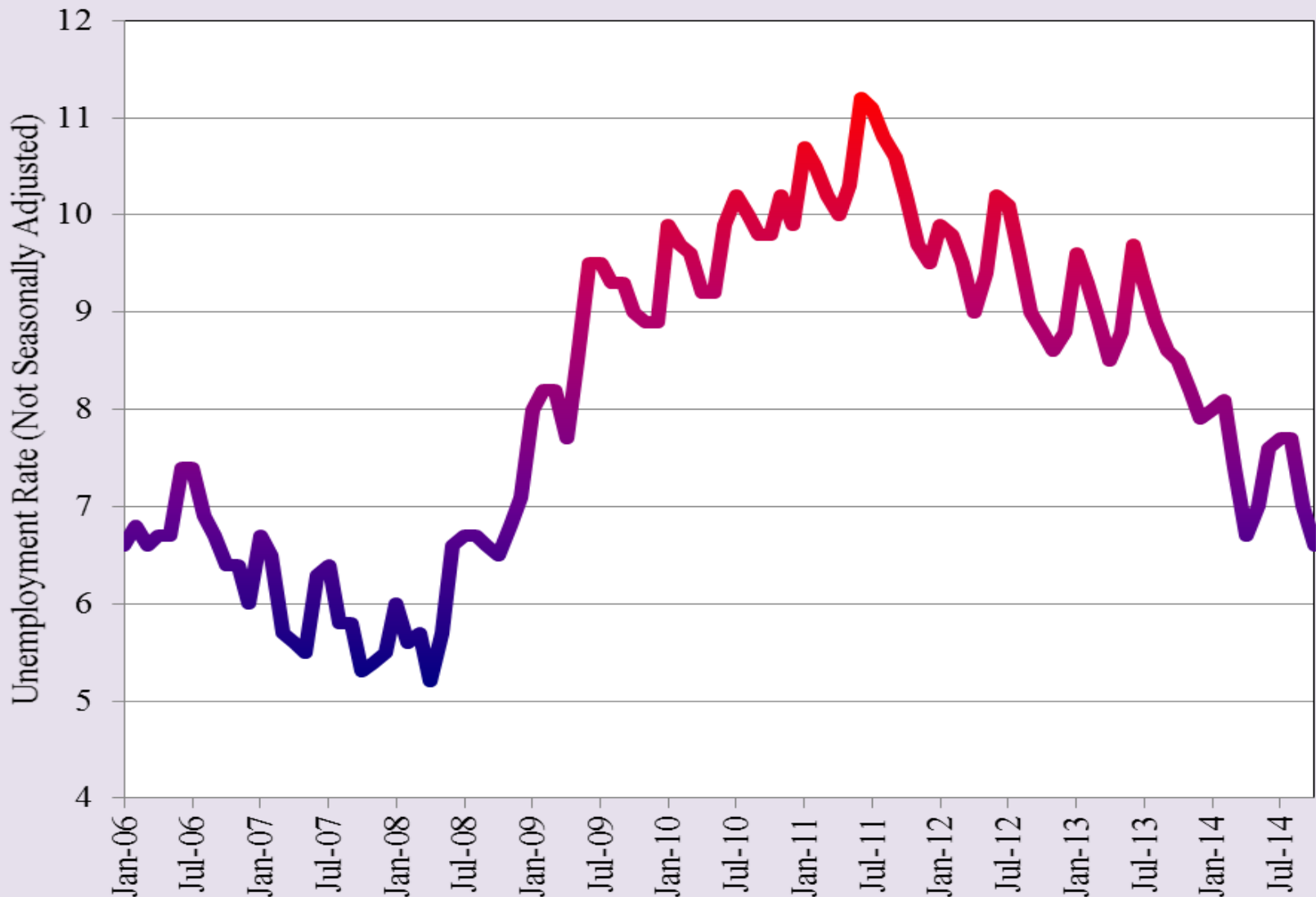
Source: Federal Reserve Bank of Dallas

## El Paso County Unemployment Rate



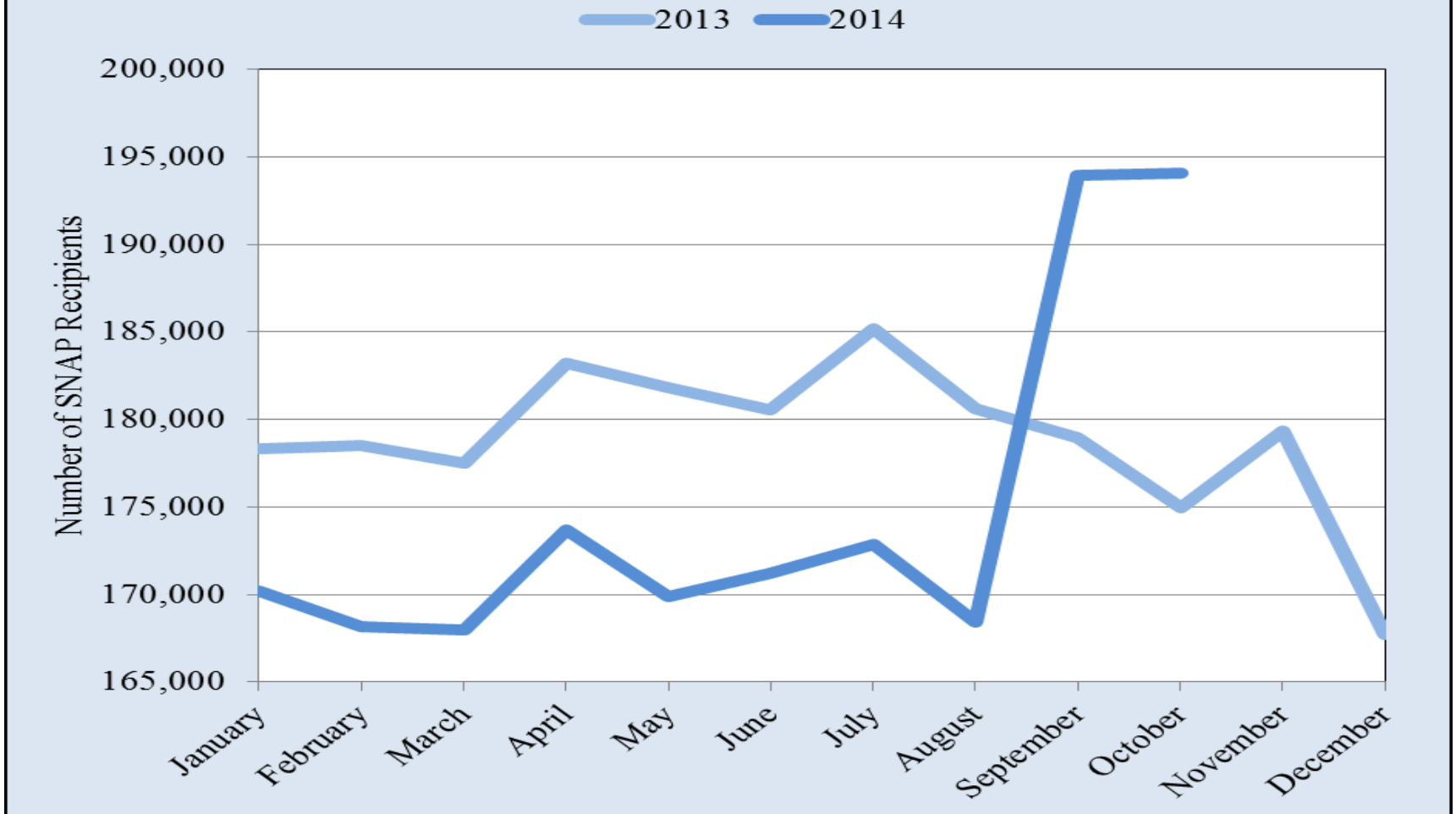
Source: Bureau of Labor Statistics

## El Paso County Unemployment Rate



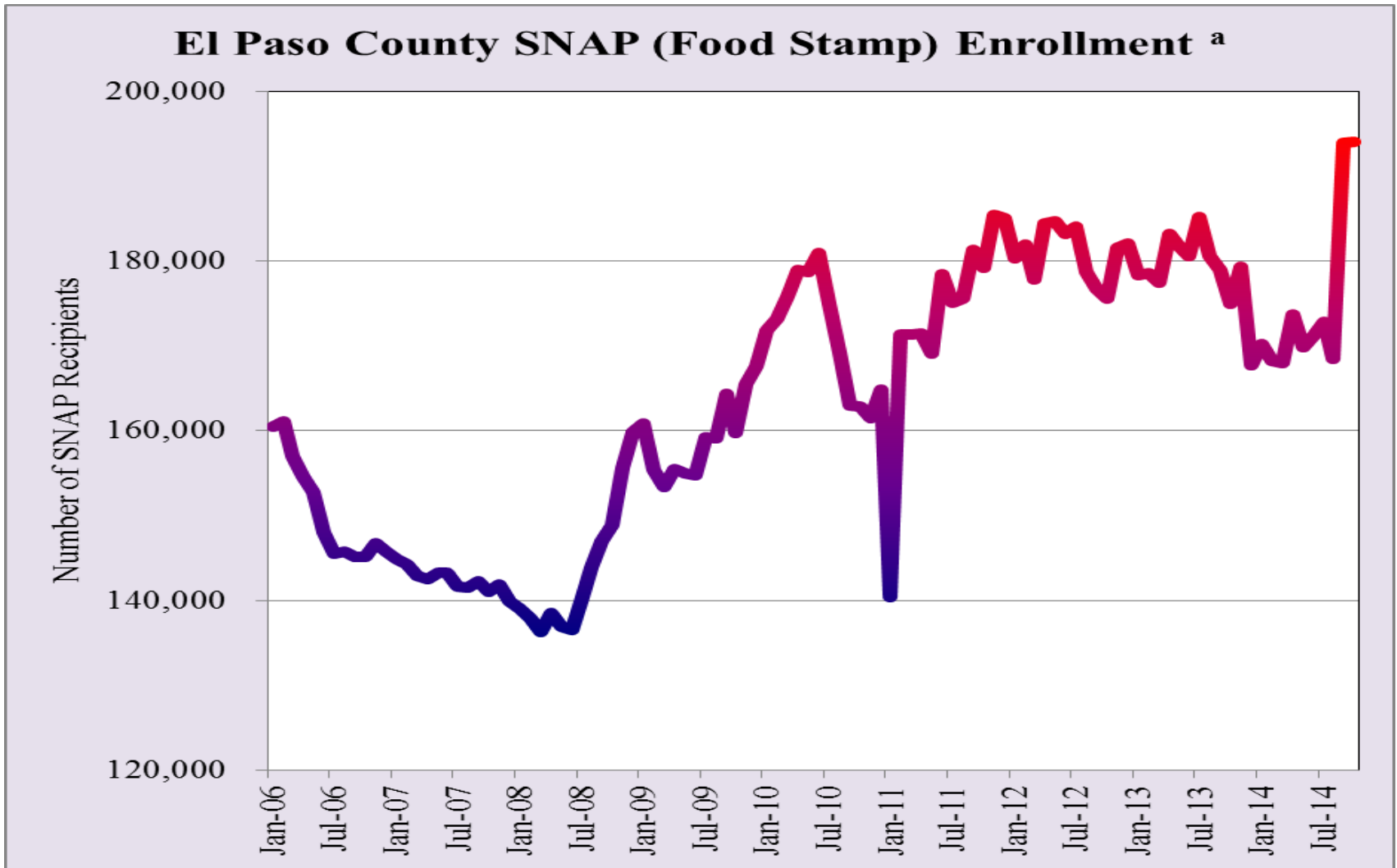
Source: Bureau of Labor Statistics

## El Paso County SNAP (Food Stamp) Enrollment <sup>a</sup>



<sup>a</sup> Starting in September, 2014, the number of SNAP recipients is recorded for the end of each month.

Source: Texas Health and Human Services Commission

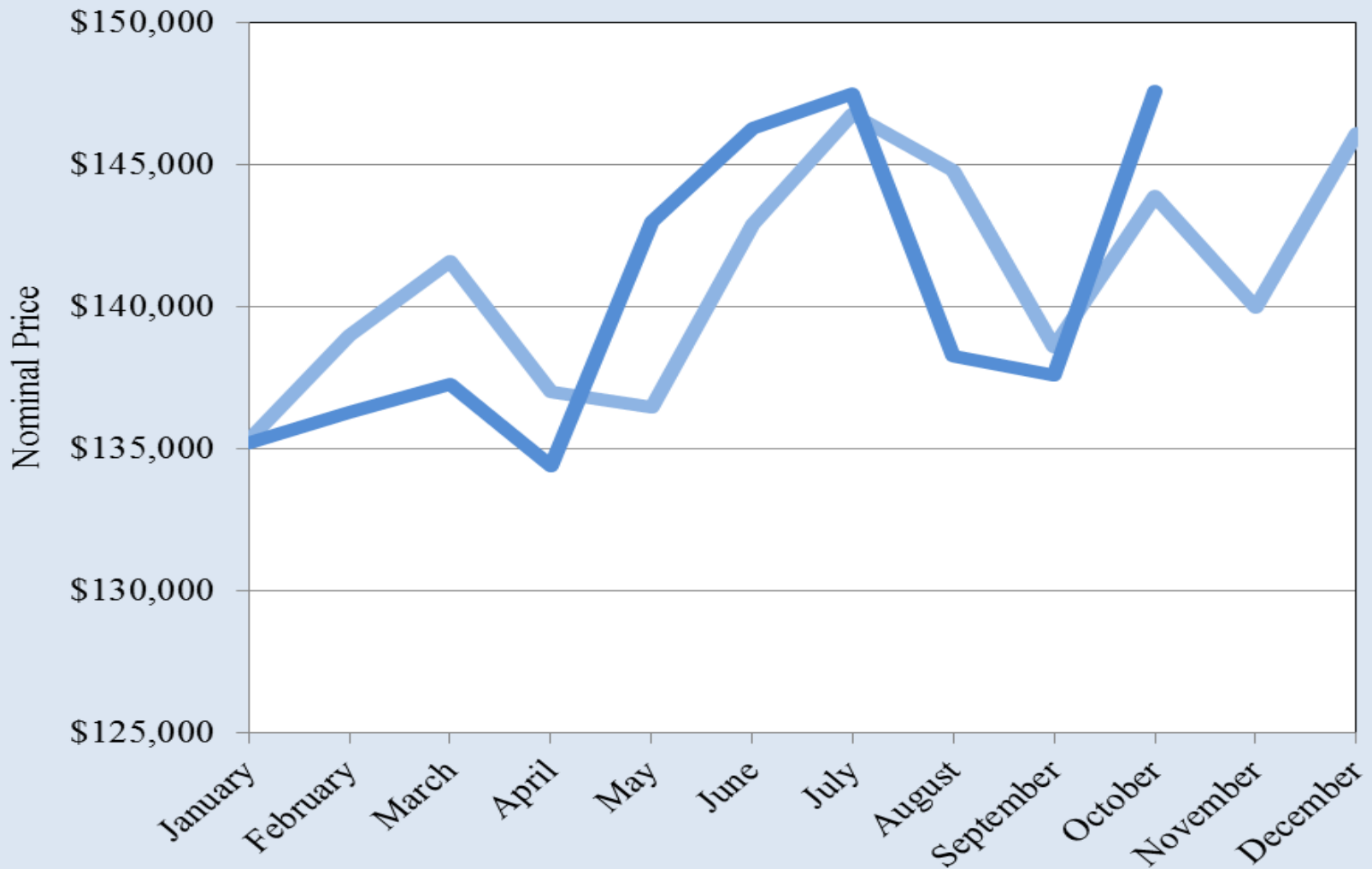


<sup>a</sup> Starting in September, 2014, the number of SNAP recipients is recorded for the end of each month.

Source: Texas Health and Human Services Commission

## El Paso Median Housing Prices

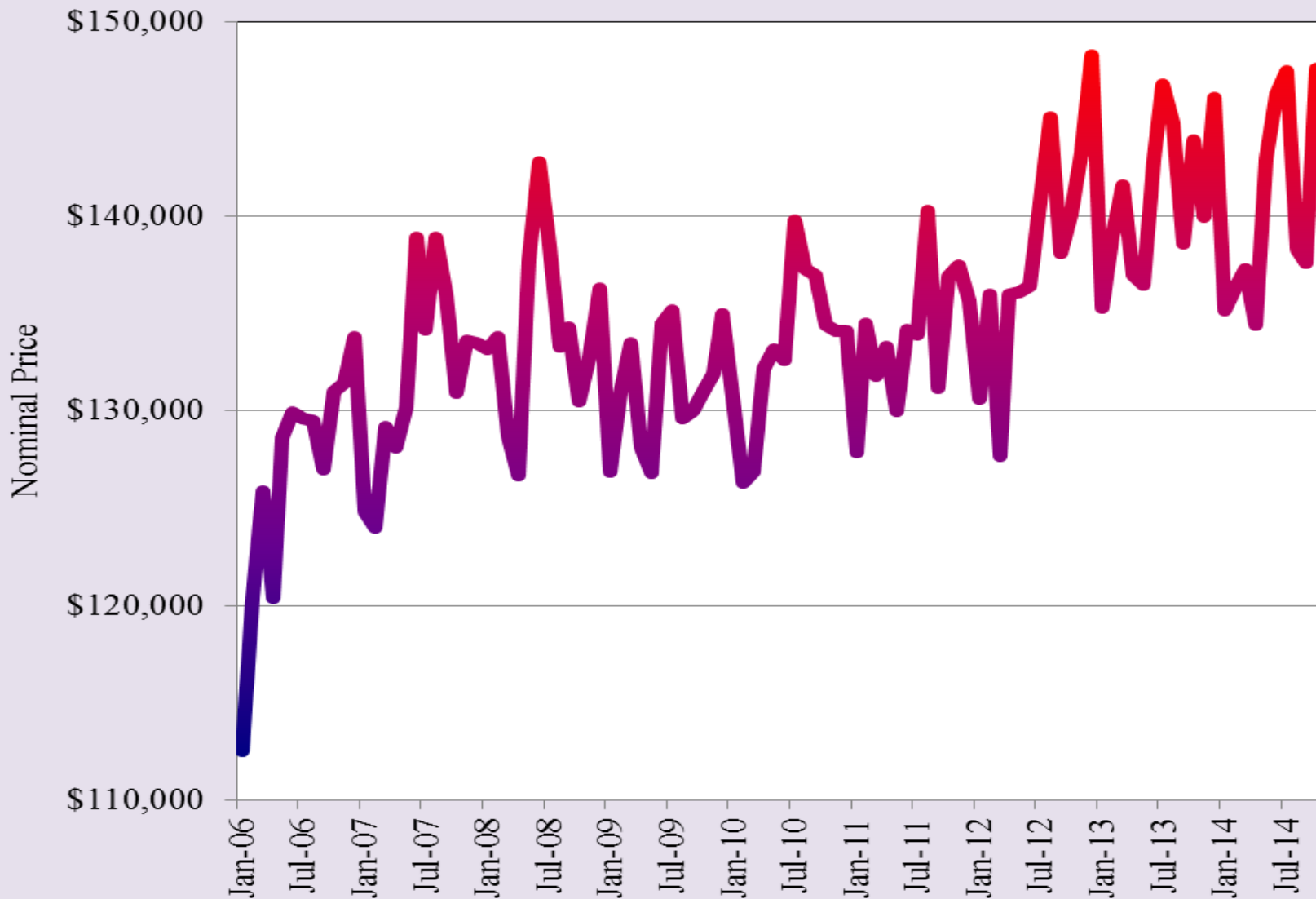
— 2013 — 2014



Source: Texas A&M Real Estate Center



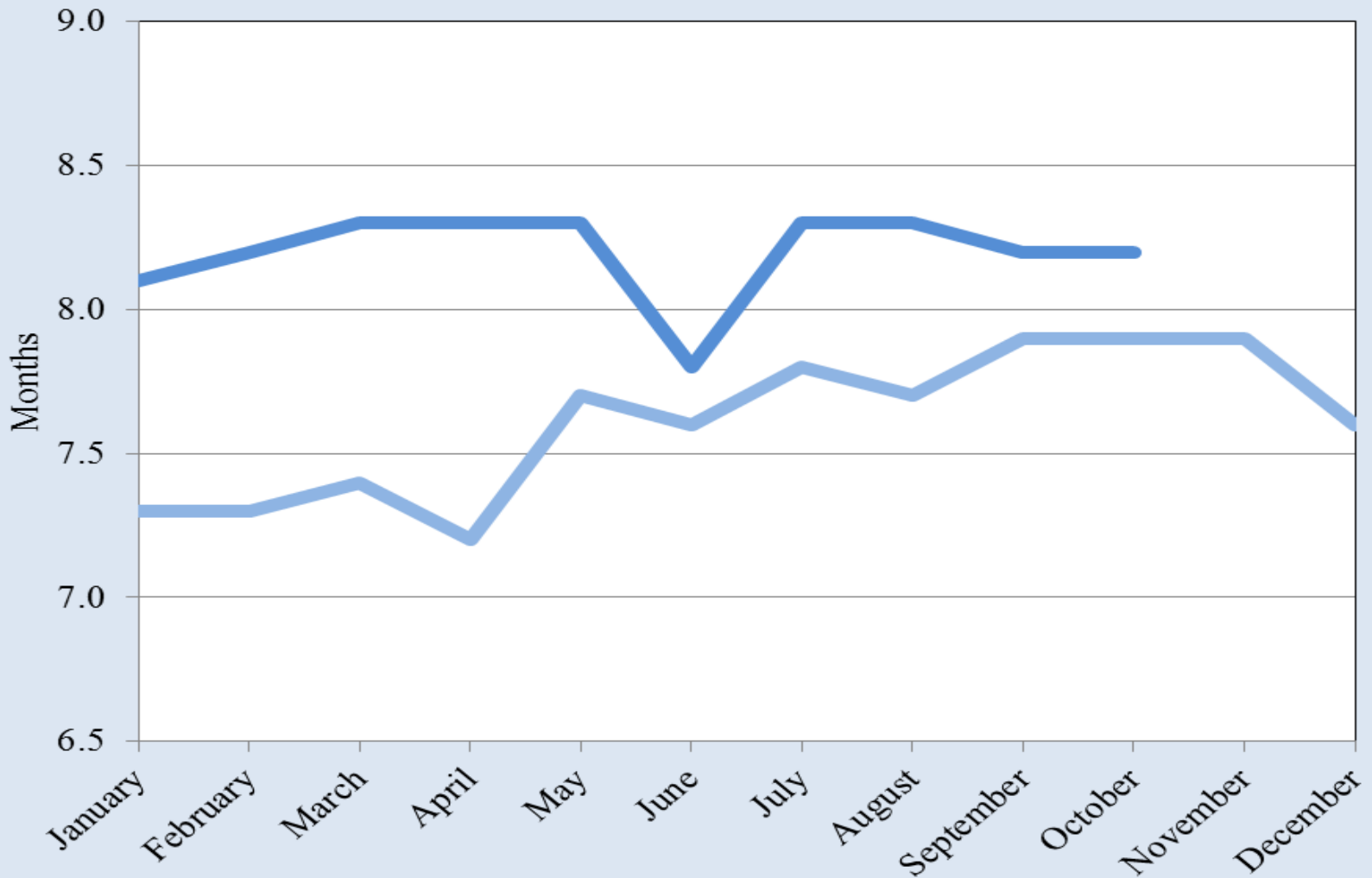
## El Paso Median Housing Prices



Source: Texas A&M Real Estate Center

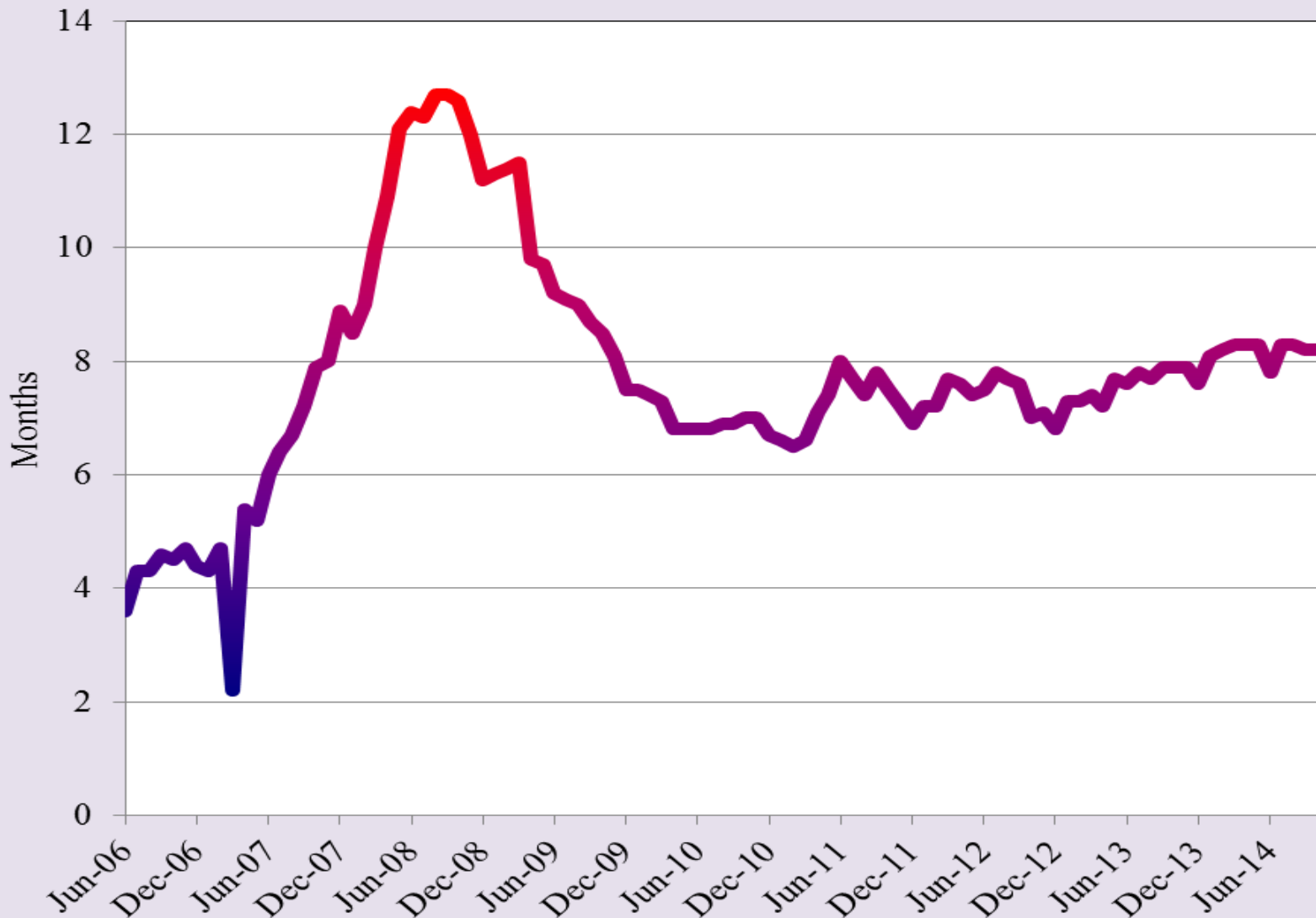
## Months of Housing Inventory for El Paso

— 2013 — 2014



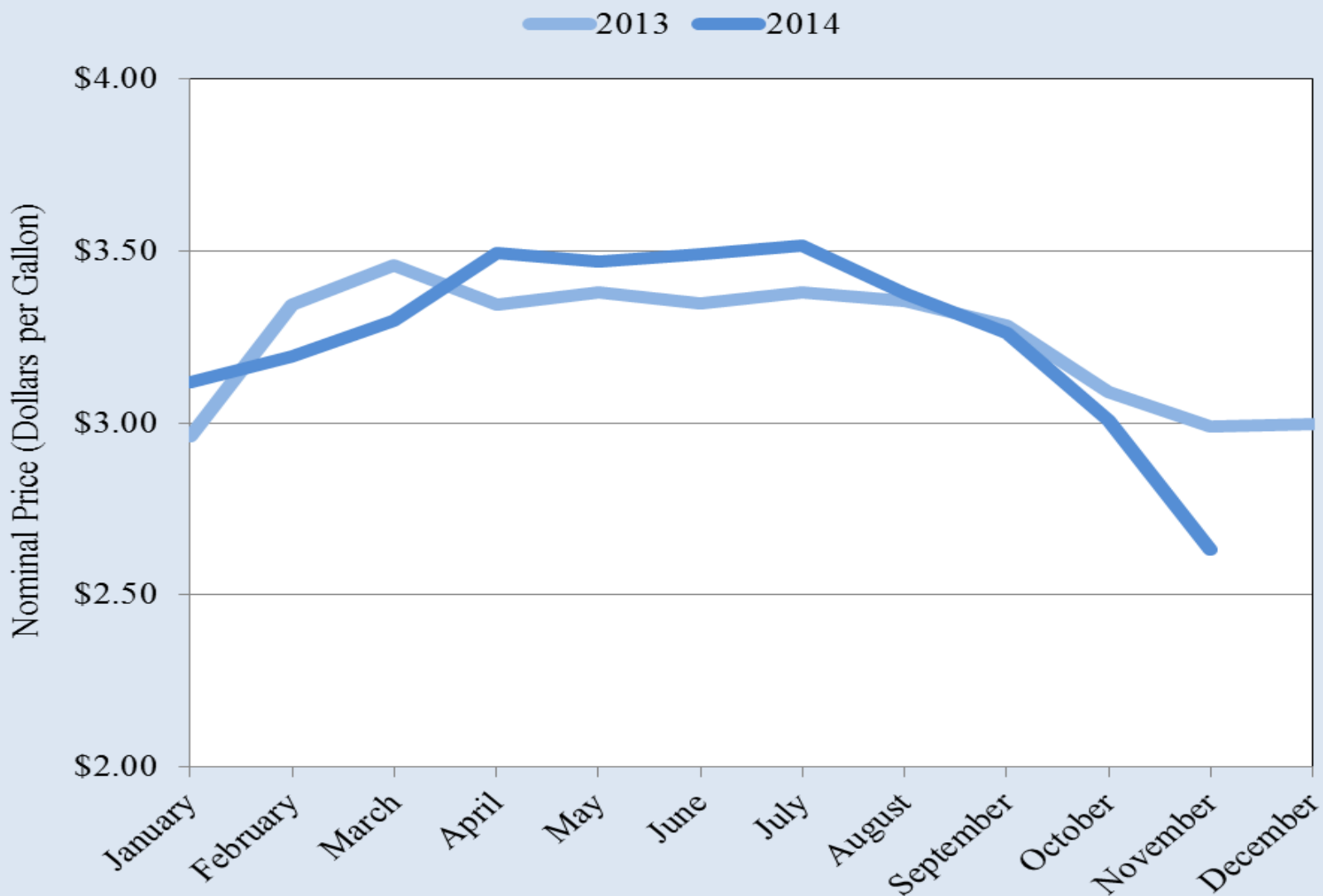
Source: Texas A&M Real Estate Center

## Months of Housing Inventory for El Paso



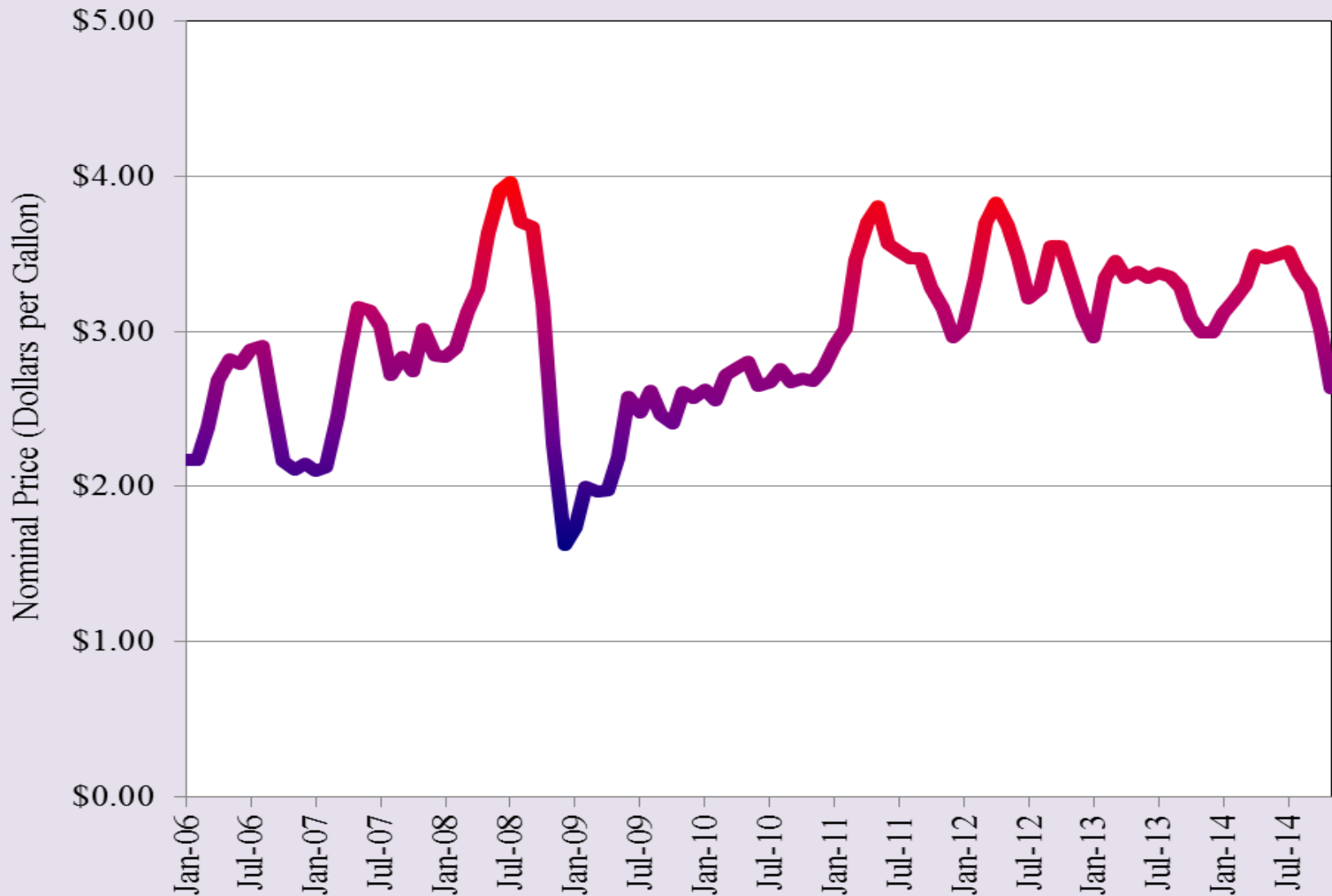
Source: Texas A&M Real Estate Center

## El Paso Gasoline Prices



Source: GasBuddy.com

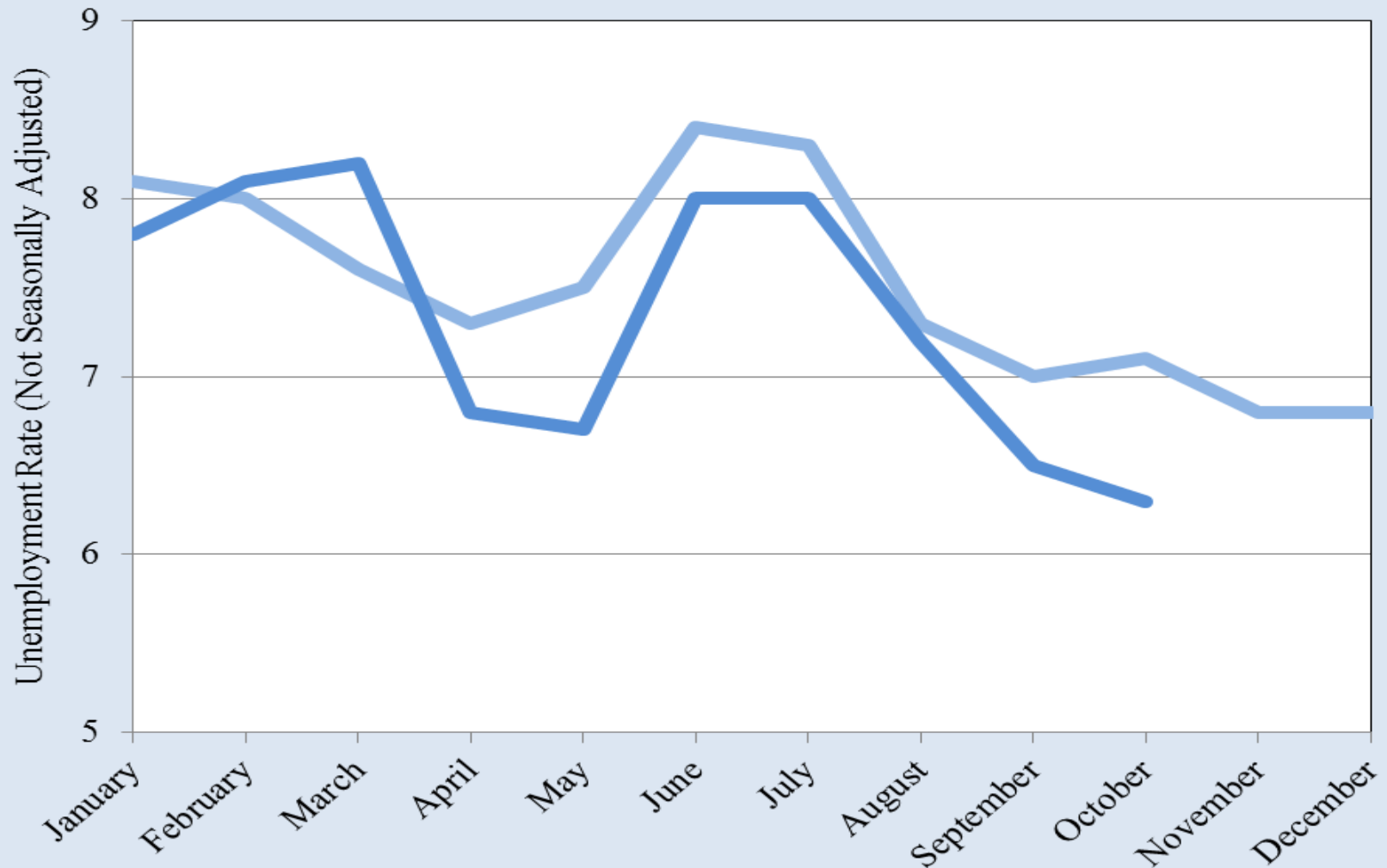
## El Paso Gasoline Prices



Source: GasBuddy.com

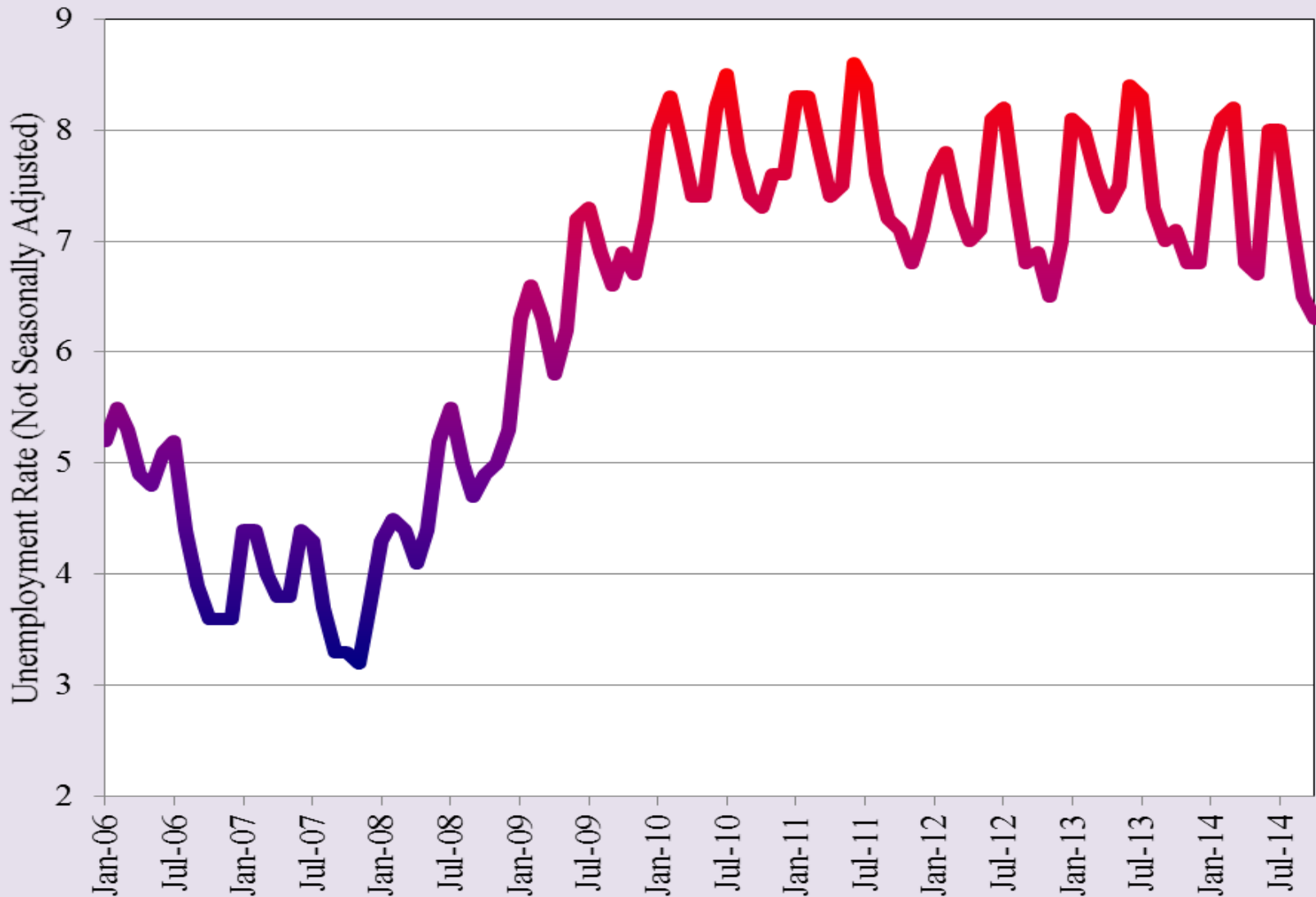
## Doña Ana County Unemployment Rate

— 2013 — 2014



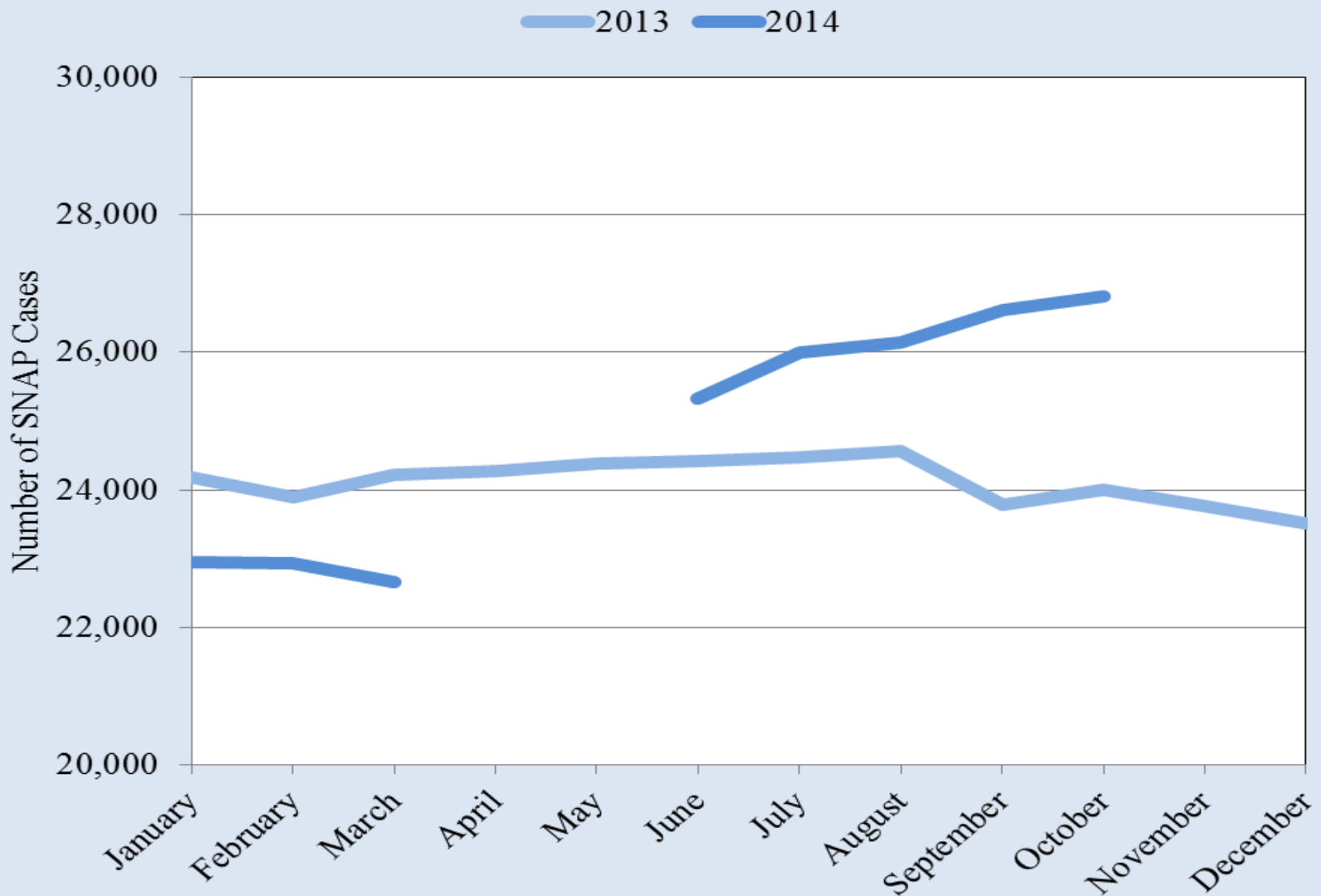
Source: Bureau of Labor Statistics

## Doña Ana County Unemployment Rate



Source: Bureau of Labor Statistics

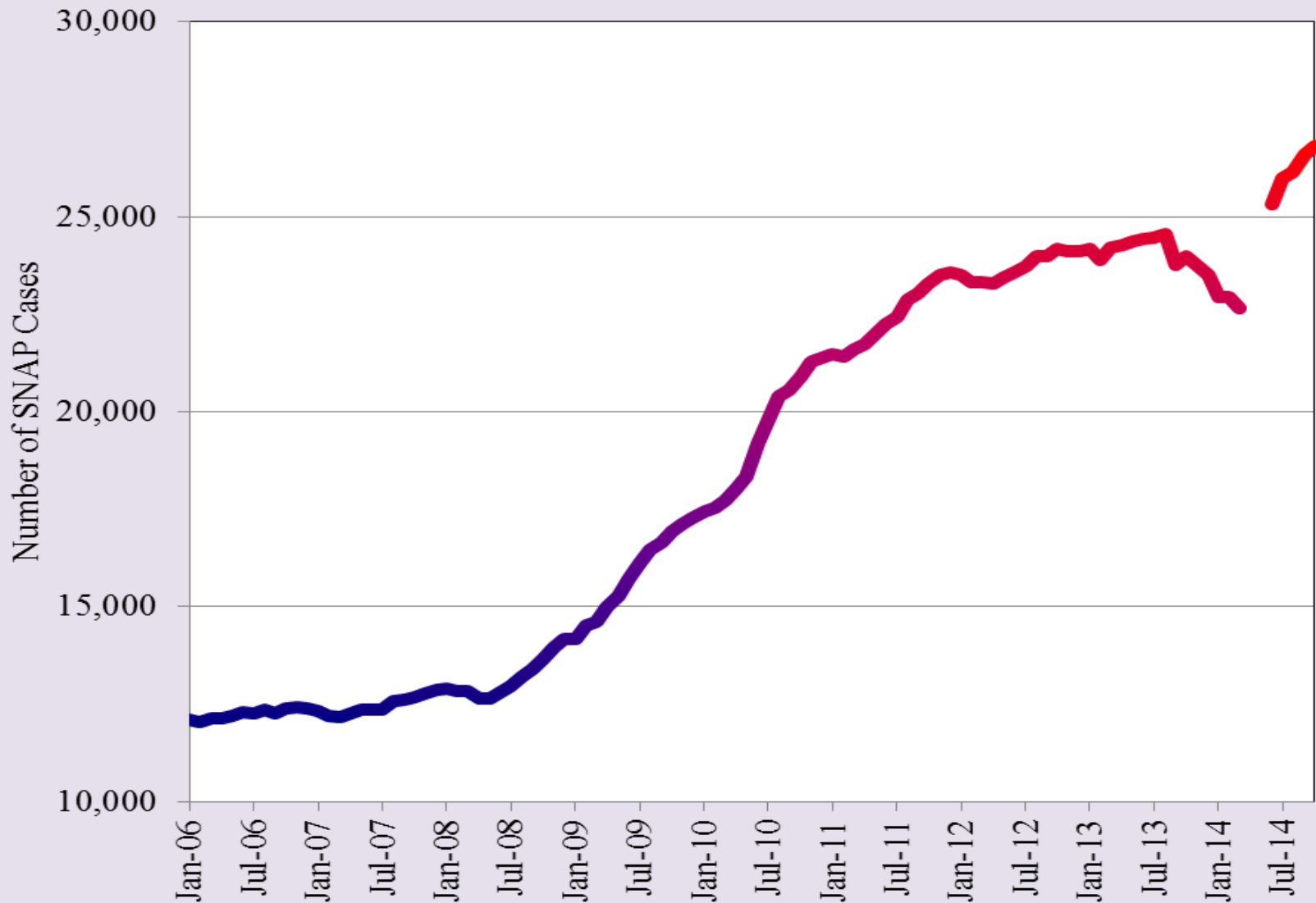
## Las Cruces Area SNAP (Food Stamp) Cases



Source: New Mexico Human Services Department

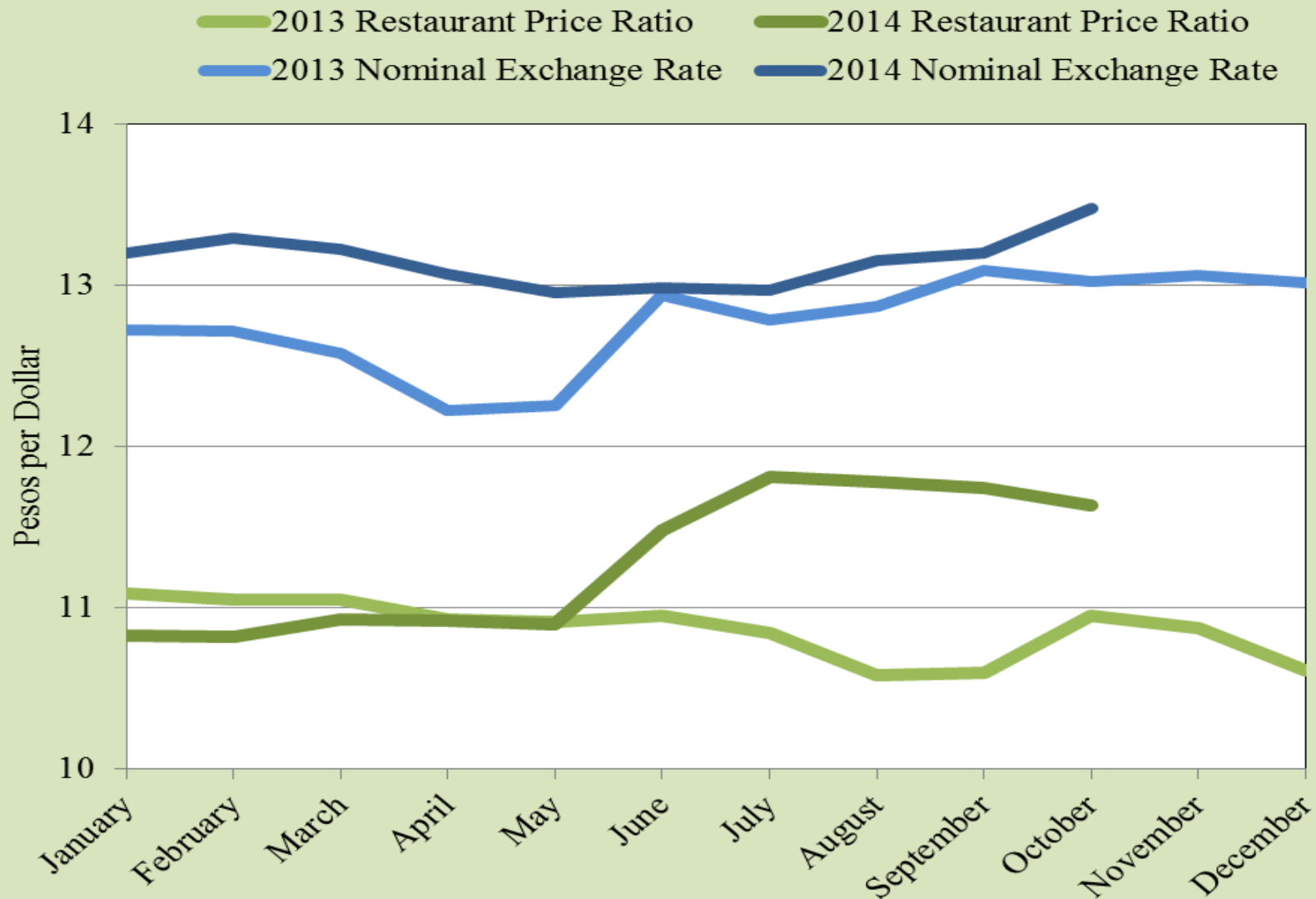


## Las Cruces Area SNAP (Food Stamp) Cases



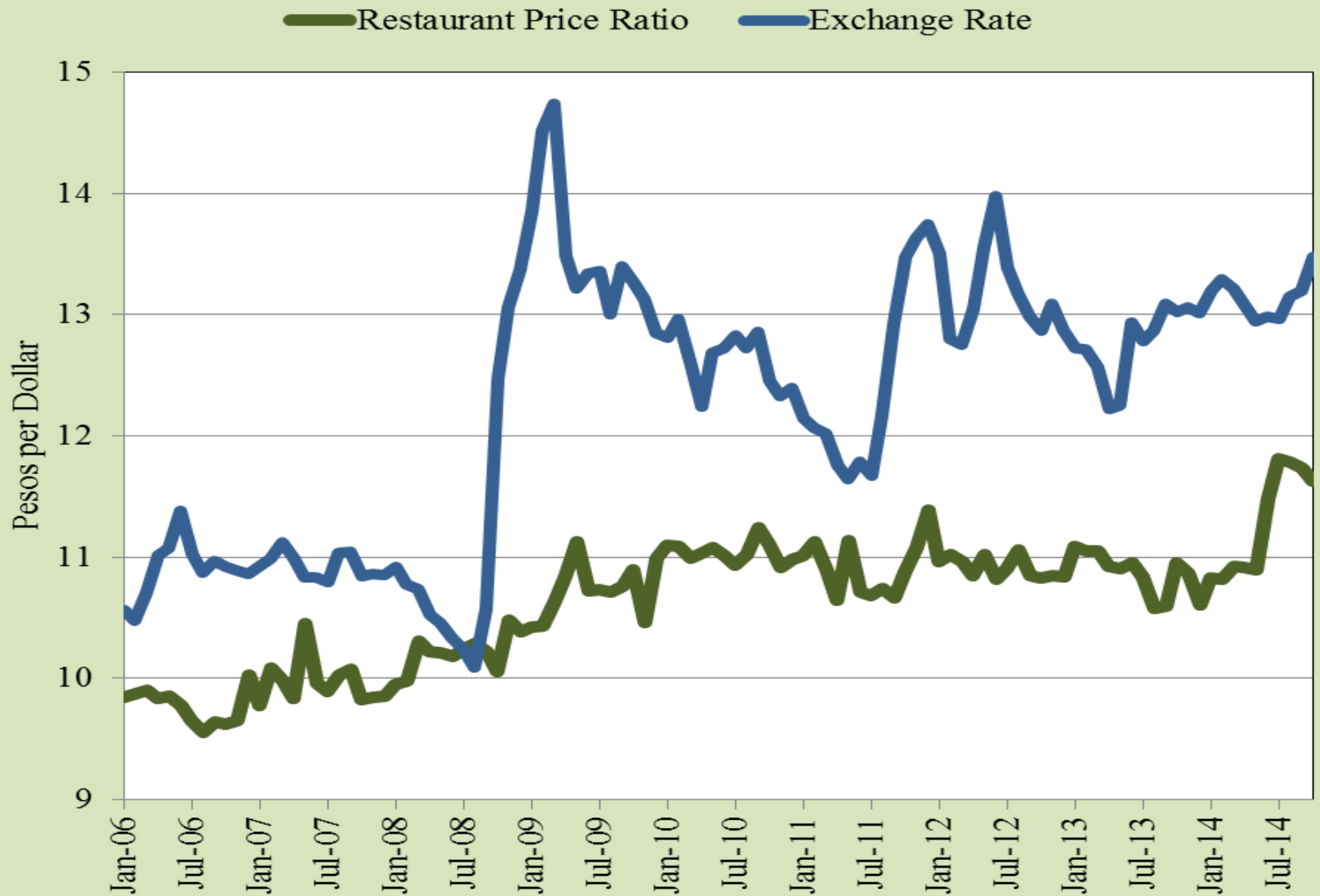
Source: New Mexico Human Services Department

## Restaurant Price Ratio and Exchange Rate



Source: UTEP Border Region Modeling Project and Banco de Mexico

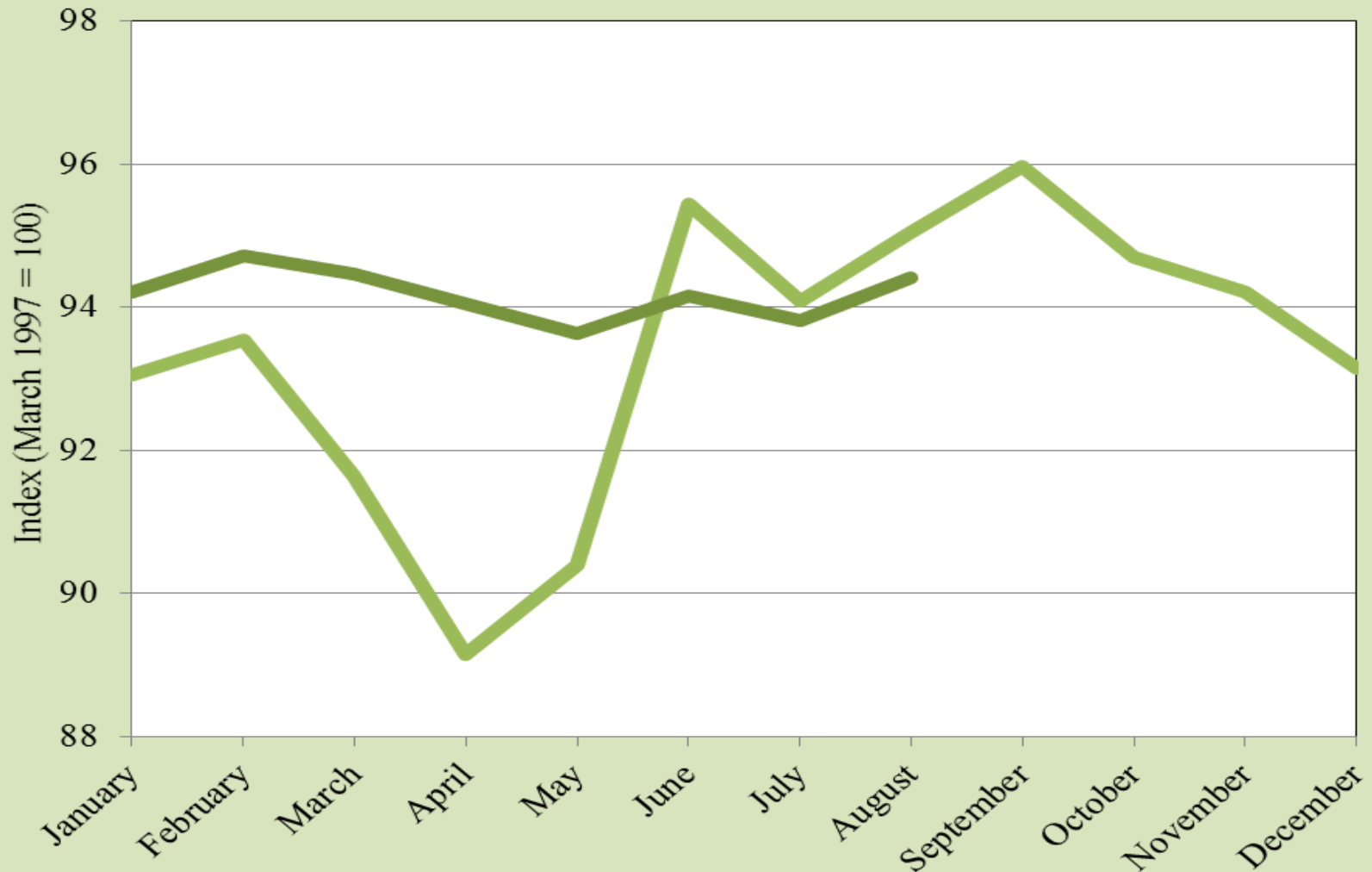
## Restaurant Price Ratio and Exchange Rate



Source: UTEP Border Region Modeling Project and Banco de Mexico

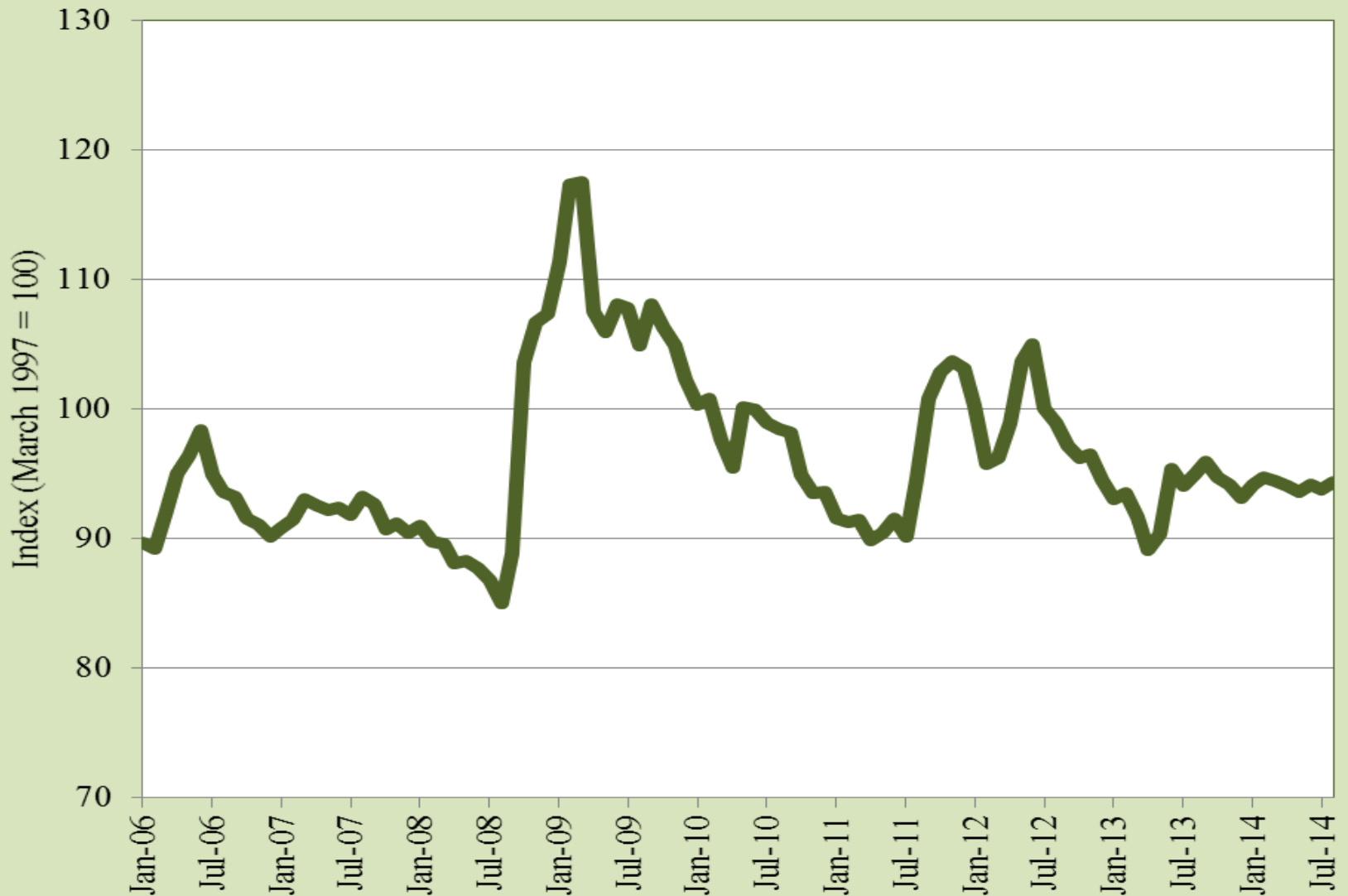
## Real Peso/Dollar Exchange Rate Index

— 2013 — 2014



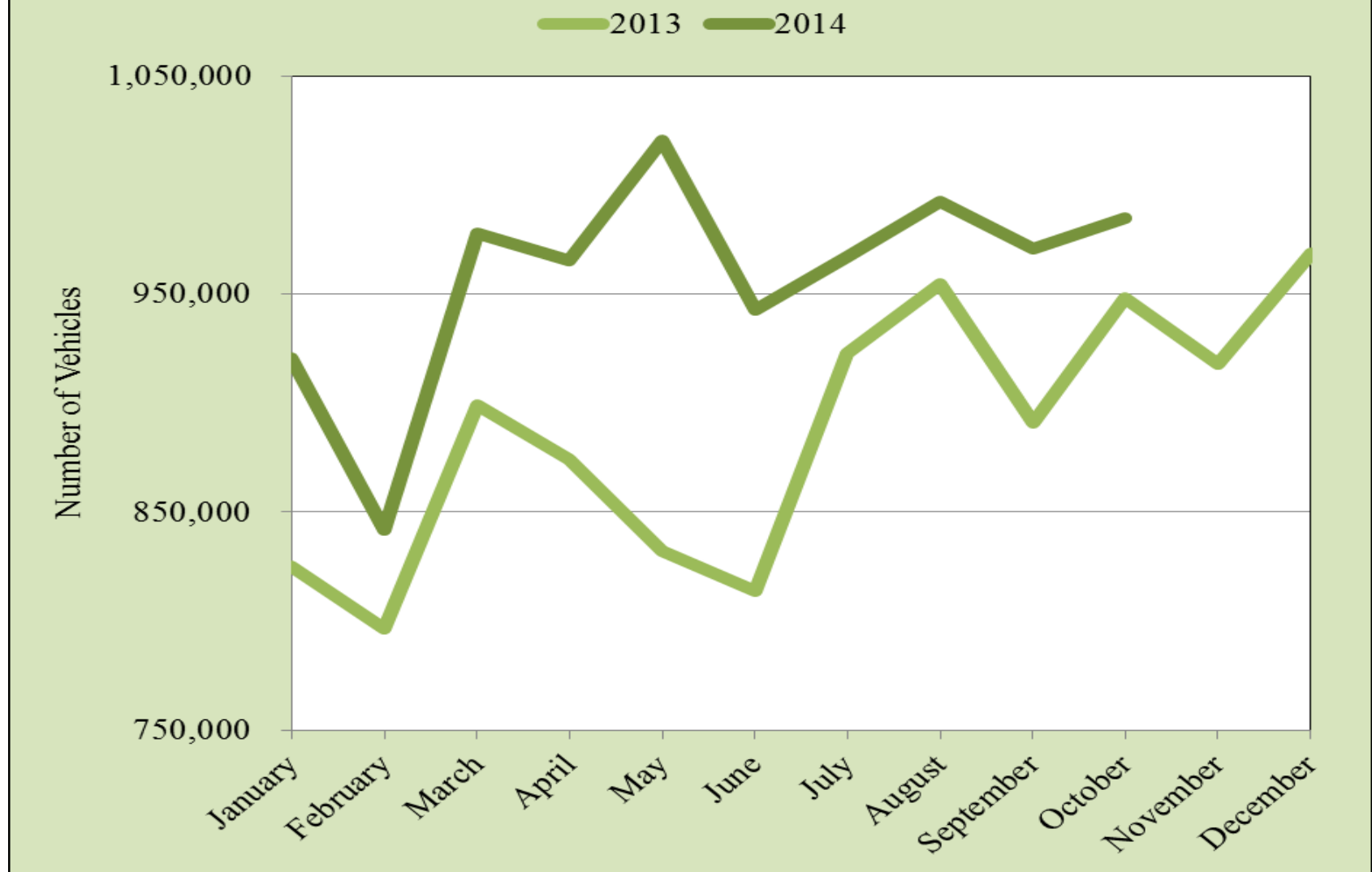
Source: UTEP Border Region Modeling Project

## Real Peso/Dollar Exchange Rate Index



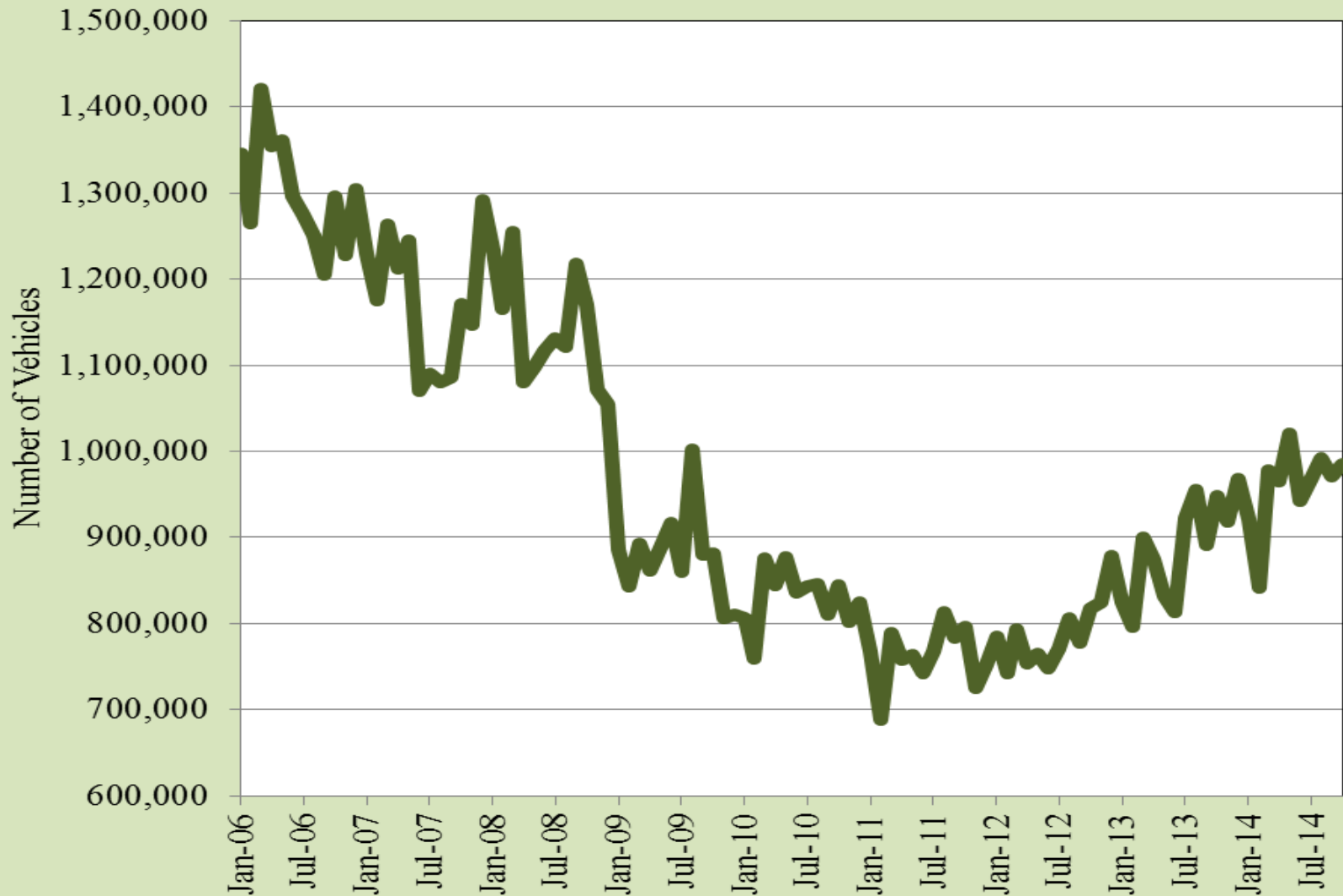
Source: UTEP Border Region Modeling Project

## International Bridge Crossings by Personal Vehicle



Source: Bureau of Transportation Statistics and U.S. Customs and Border Protection

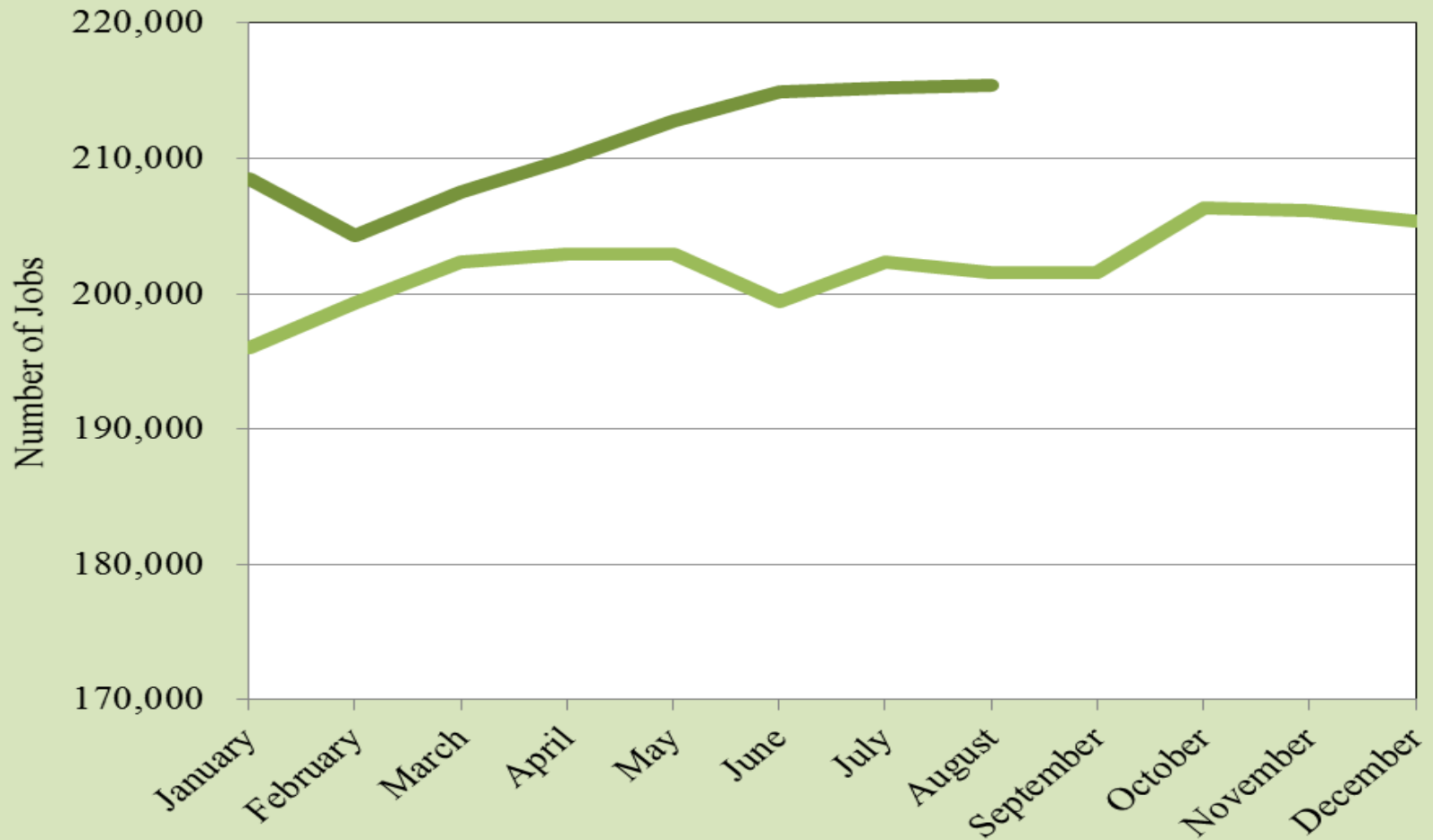
## International Bridge Crossings by Personal Vehicle



Source: Bureau of Transportation Statistics and U.S. Customs and Border Protection

## Export-Oriented Manufacturing Employment in Ciudad Juárez

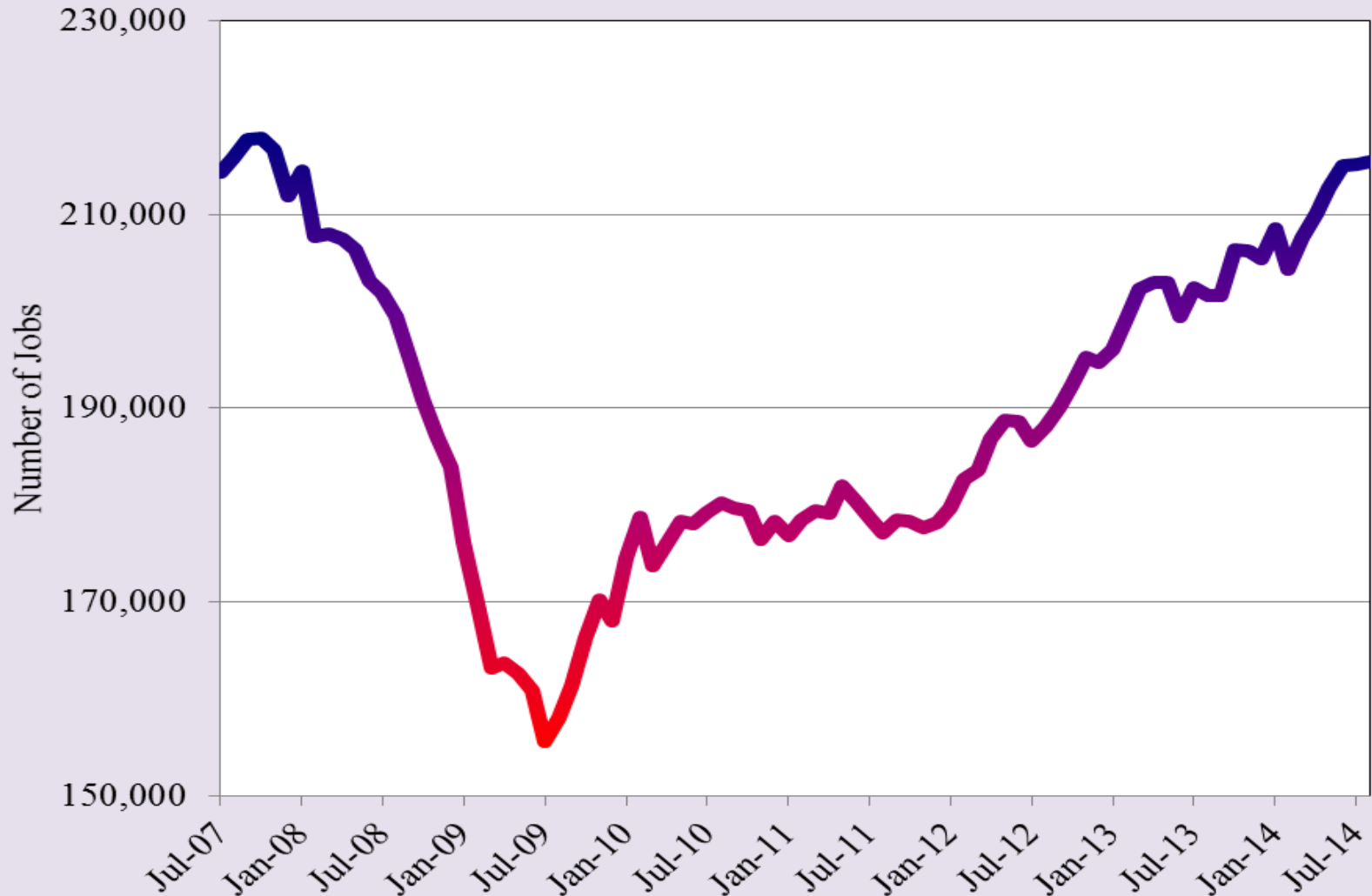
— 2013 — 2014



Source: INEGI



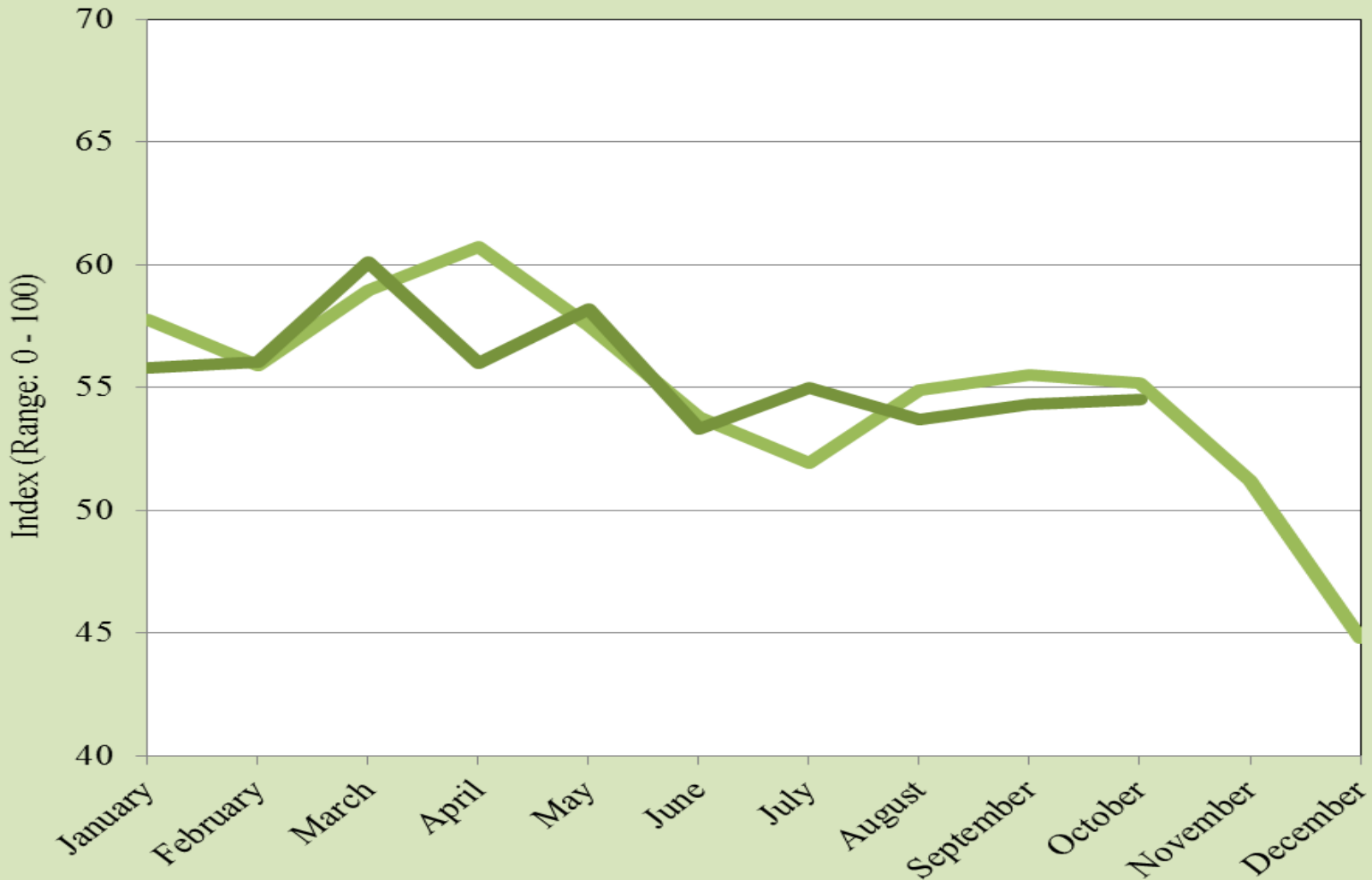
## Export-Oriented Manufacturing Employment in Ciudad Juárez



Source: INEGI

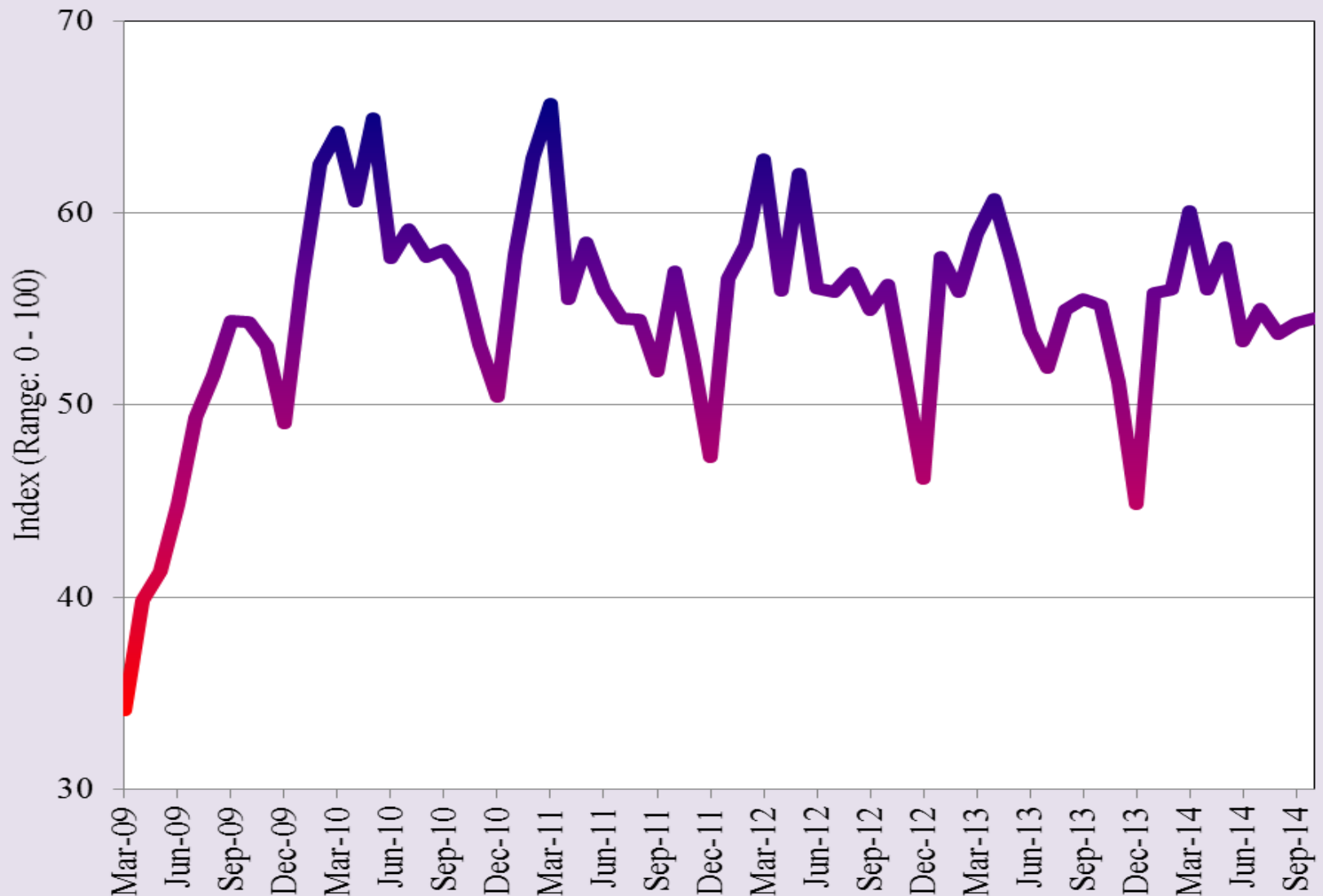
# Northern Mexico Manufacturing Orders Index

— 2013 — 2014



Source: Banco de México

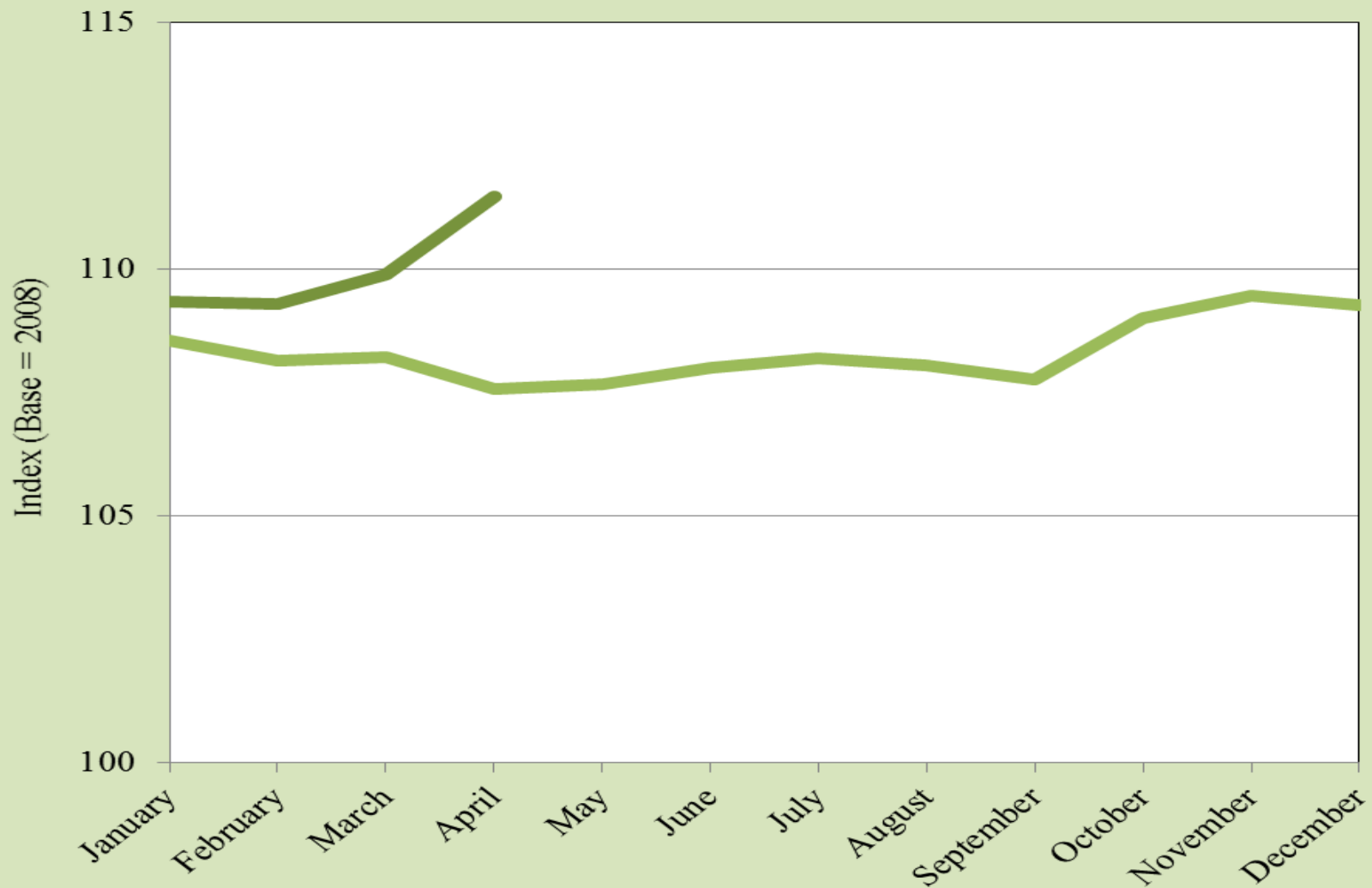
## Northern Mexico Manufacturing Orders Index



Source: Banco de México

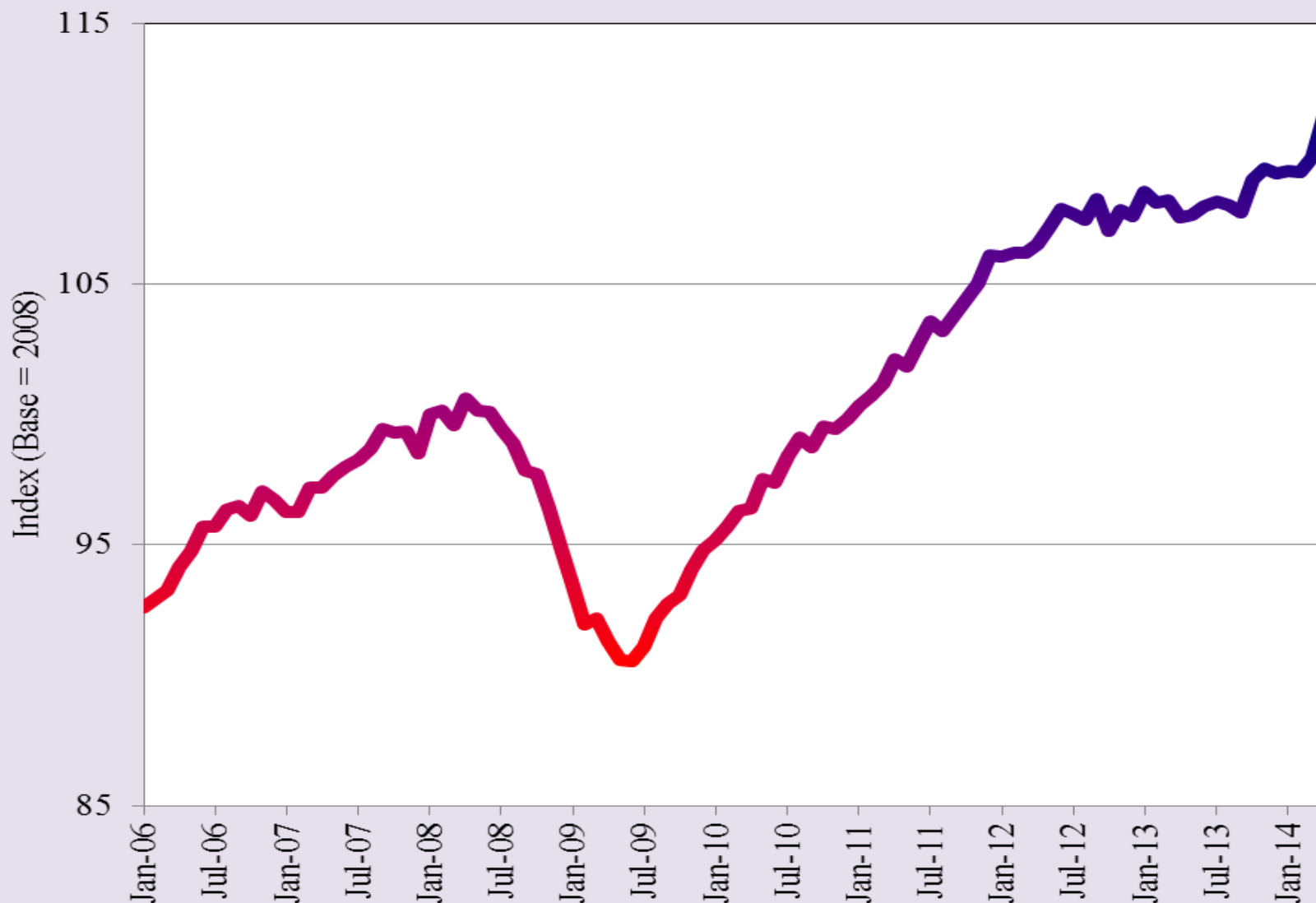
## Northern Mexico Coincident Index

— 2013 — 2014



Source: Banco de México

## Northern Mexico Coincident Index



Source: Banco de México



Short-Term to  
2016