



Net Medical Xpress

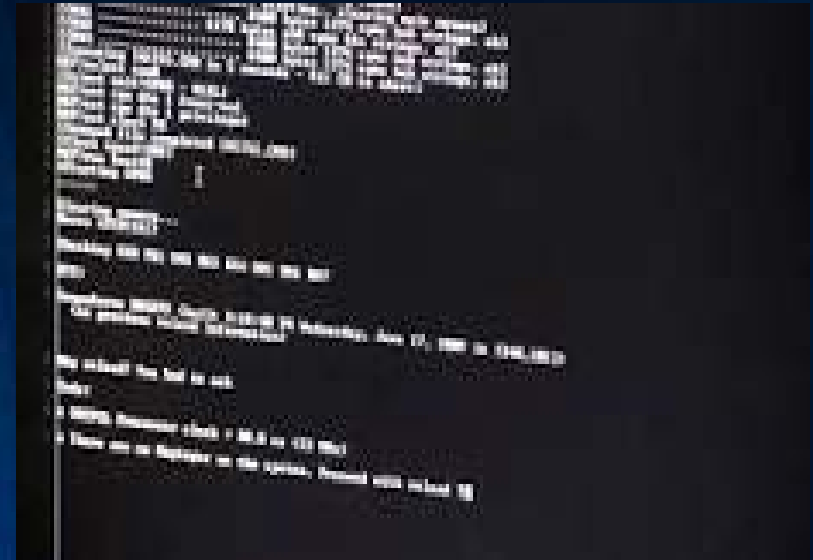
NEWEST DEVELOPMENTS IN TELEMEDICINE TECHNOLOGY

Mesilla Valley Economic Development Alliance – October 1, 2019

Views on How Telemedicine Can Help Enhance New Mexico's Economy

- How We Got Here - Technology
- Marketing Problems –
- Crossing the Chasm
- Physician Issues
- What It Takes
- Technology
- Real Life Example
- The Future - Promises

We've Come A long Way



Use this code to add a picture to a page:

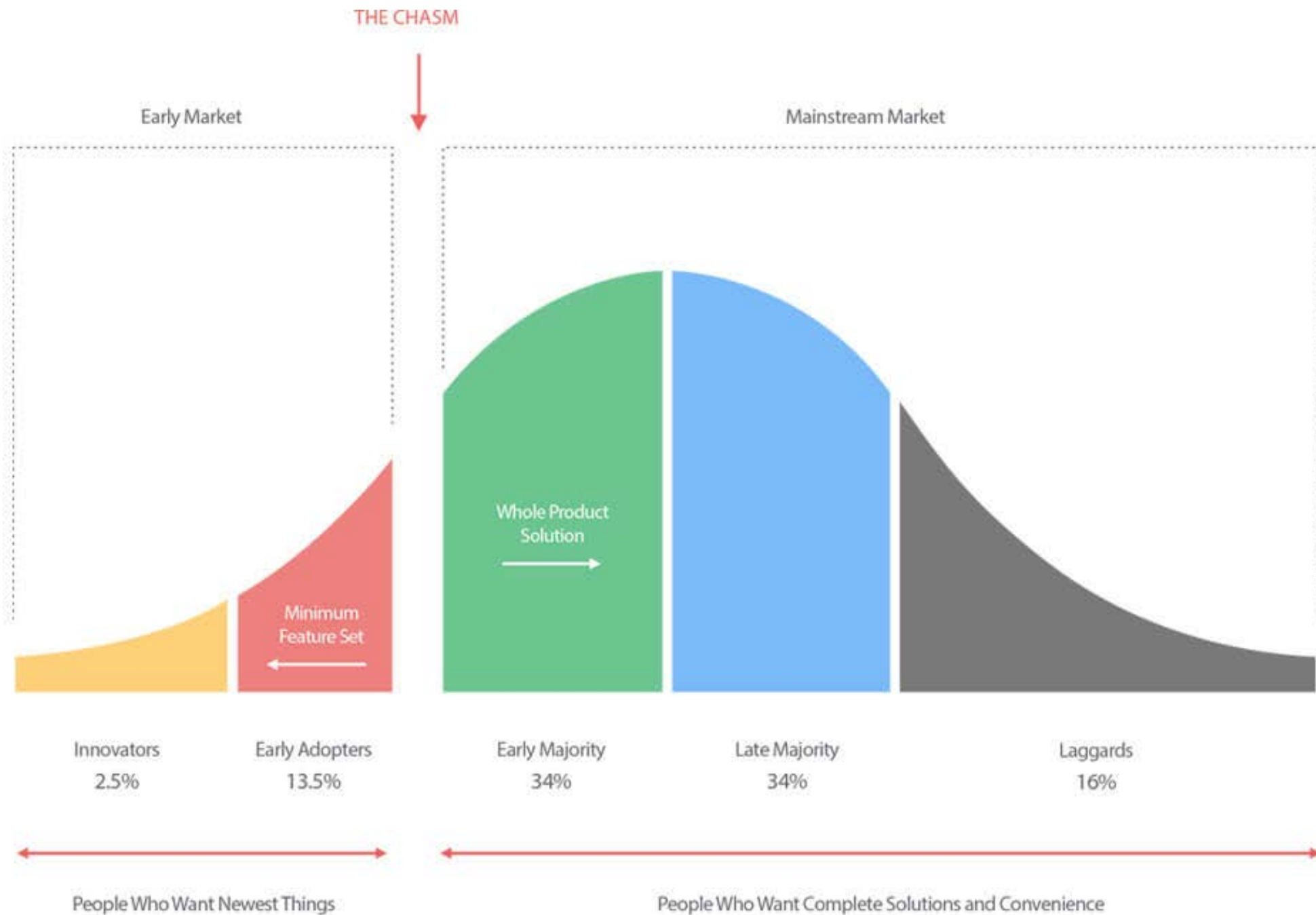
```

```

Code example: ``

What the visitor sees on the page:





TWO-STROKE OUTBOARDS ARE ALIVE AND WELL P.50

BOATING

WORLD'S LARGEST POWERBOAT MAGAZINE



GET A BEATING TO FISHING
NABLAJA
P.12

HOW TO CHOOSE THE RIGHT TRAILER

GALVANIZED,
ALUMINUM
OR PAINTED

P.36

EDGEWATER
36CC
DIPPING OUT
P.71

LAUNCH-
RAMP
SAFETY
RULES

P.24

MARINE ELECTRONICS
NEW AUDIO
ALTERNATIVES

P.70



GO PWC
FISHING!
3 PROS SHARE
THEIR BEST TIPS

P.52

CERTIFIED BOAT TESTS

P.38

EDGEWATER 36BCC
BENETEAU SWIFT TRAWLER 30
CHRIS-CRAFT CALYPSO 26
REGAL 2300 RK SURF
G3 SUNCATCHER ELITE 324 RS
HURRICANE CC21



ESTABLISHED
1966

How the Physician Market is Changing



What's It Going to Take to Start Up

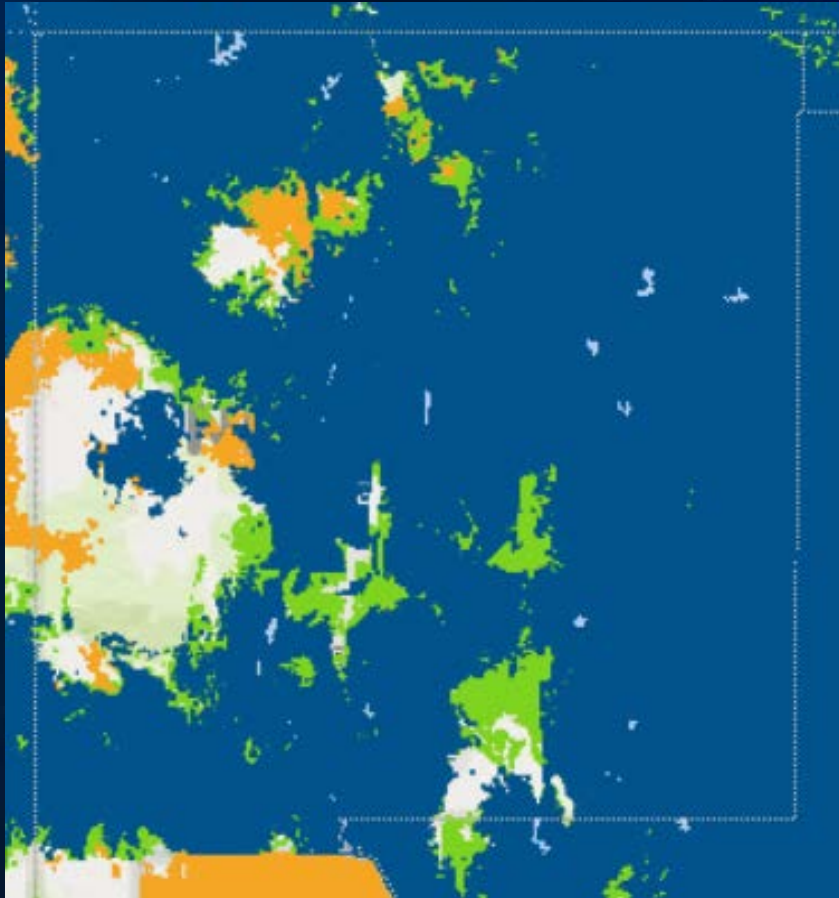
1. **Providers** – State licenses, privileges, compensation, scheduling, expectations of services provided, routine or emergency services, backup providers, malpractice insurance for telemedicine, Staffing and Recruiting
2. **Call center 24/7** – appointment scheduling, technical support, alerts on changes to schedules, manage calls based on needs
3. **Licensing** – State medical boards, credentialing at facilities, updates for providers licenses, source verification, FCVS applications, application management, renewals
4. **Pricing** – cost of providers plus cost of telemedicine management, not included in insurance or medicare reimbursements, cyber liability insurance, multiple management programs and costs, Cloud services
5. **Service Type** – Rural, Urban, International, Emergency, Clinic, Chronic, Education, Practice Type (Family medicine, pediatrics, Urgent care, Neurological, Derm, Psychiatry, etc)

Technology

1. **Engineering** – development and deployment of cloud based services
2. **Program Management** – management of projects
3. **IT Support** – managing networks to ensure safety, security, and reliability
4. **Technology deployment teams** - customization
5. **Executive leadership** – responsibility for making it work

Technology Deployment: Purchasing, Infrastructure, Operating System, Cloud, Hardware, Software, Imaging, Transfer Protocols, Security, General Business personnel

Technology – Can This All Be Done?



4G LTE

Other AT&T coverage

Off-net coverage



Real Life Example



Real Life Example



What Your Program Gets

Convenience

Capacity

Continuity of Care

Cost

Cutting Edge

Net Medical's Future – Artificial Intelligence





Net Medical Xpress

NEWEST DEVELOPMENTS IN TELEMEDICINE TECHNOLOGY

Thank You for Listening