

Cross Border Xpress



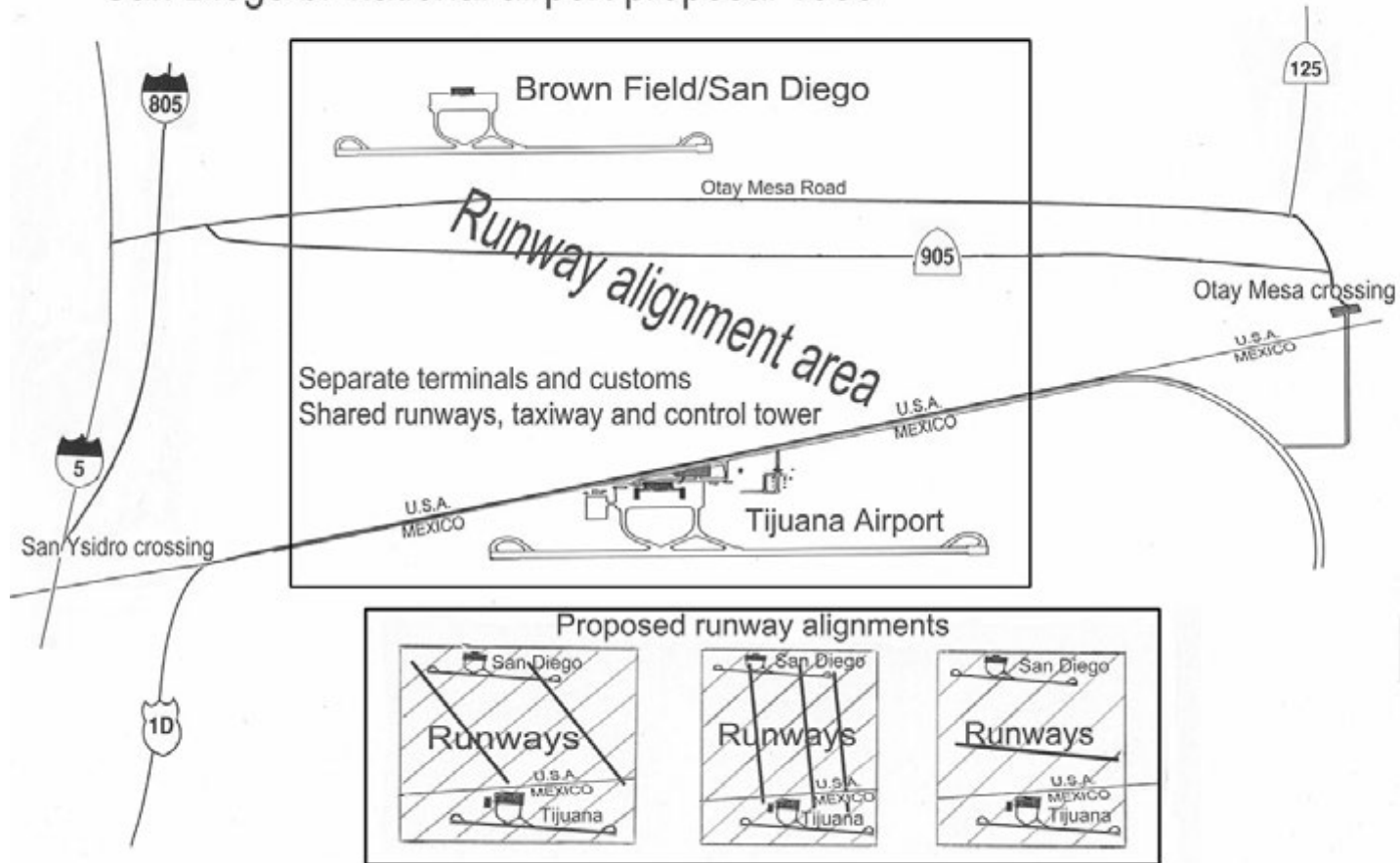
From Concept to Reality

San Diego Airport

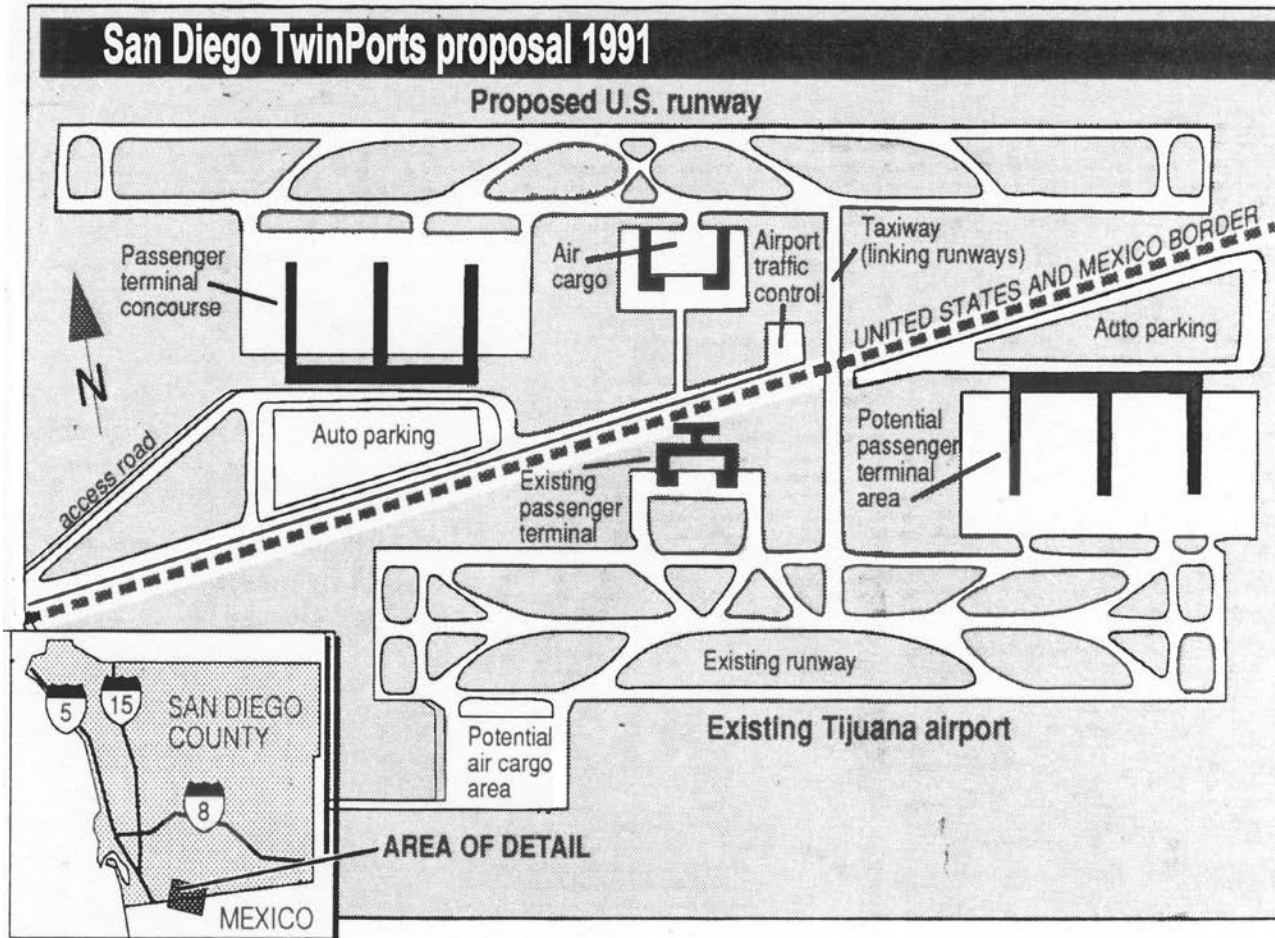


San Diego Bi-national Airport

San Diego bi-national airport proposal 1990



TwinPorts



TwinPorts

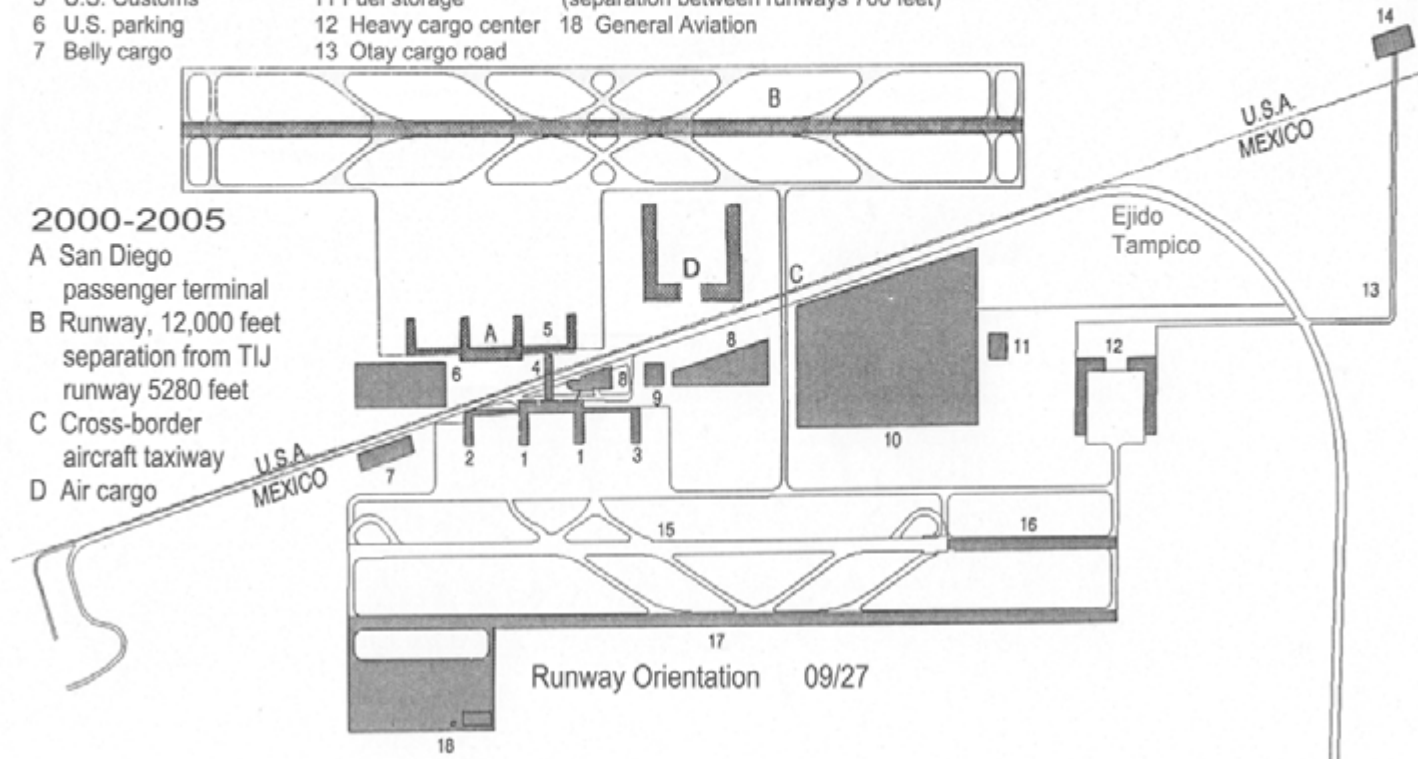
Valenzuela Phased Development 1992-2005 Tijuana/San Diego International Airports

1992-2000

- | | | |
|---------------------------|---------------------------------------|---|
| 1 Domestic terminal | 8 Mexico parking | 14 Otay Mesa crossing |
| 2 Charter terminal | 9 Airport hotel | 15 Runway 1, 8200 feet |
| 3 International terminal | 10 Matrix aircraft maintenance center | 16 Runway extension, 2300 feet |
| 4 Passenger bridge/tunnel | 11 Fuel storage | 17 Runway 2, 10,500 feet
(separation between runways 700 feet) |
| 5 U.S. Customs | 12 Heavy cargo center | 18 General Aviation |
| 6 U.S. parking | 13 Otay cargo road | |
| 7 Belly cargo | | |

2000-2005

- A San Diego passenger terminal
- B Runway, 12,000 feet separation from TIJ runway 5280 feet
- C Cross-border aircraft taxiway
- D Air cargo



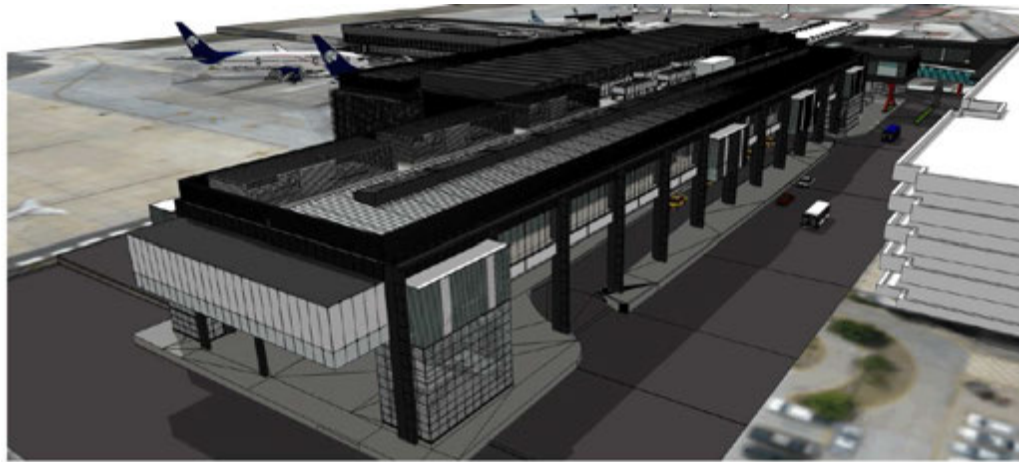
Cross Border Xpress -CBX



State-of-the-Art Terminal



Planning for the Future



New 120,000 sqft building

\$79M investment





Paola Avila

Vice President

International Business Affairs

 @Paola_SDRCC

Making the San Diego region the best place to live and work