

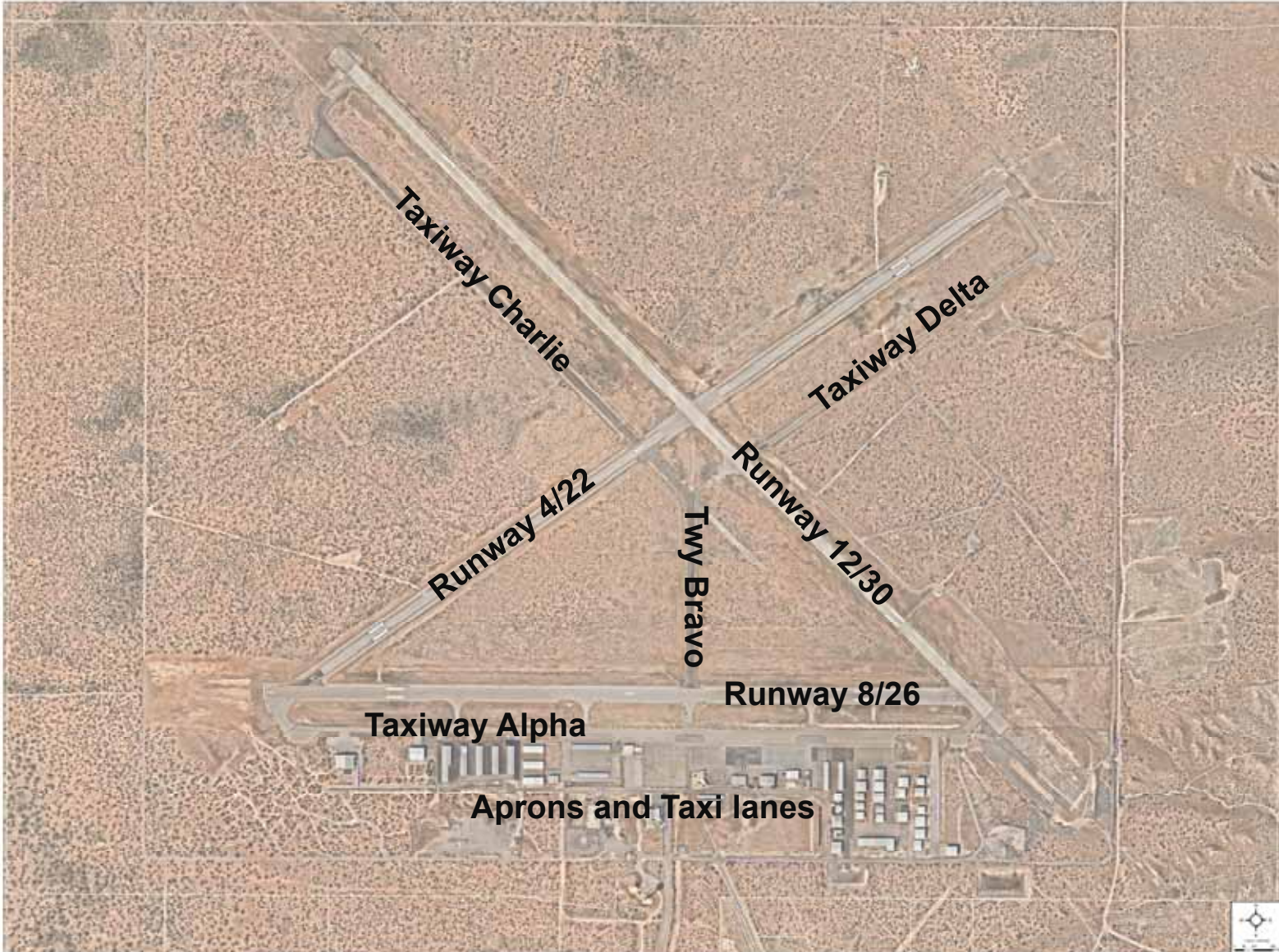
Las Cruces International Airport: Local Aviation's Past, Present, and Future

MVEDA
August 5, 2021



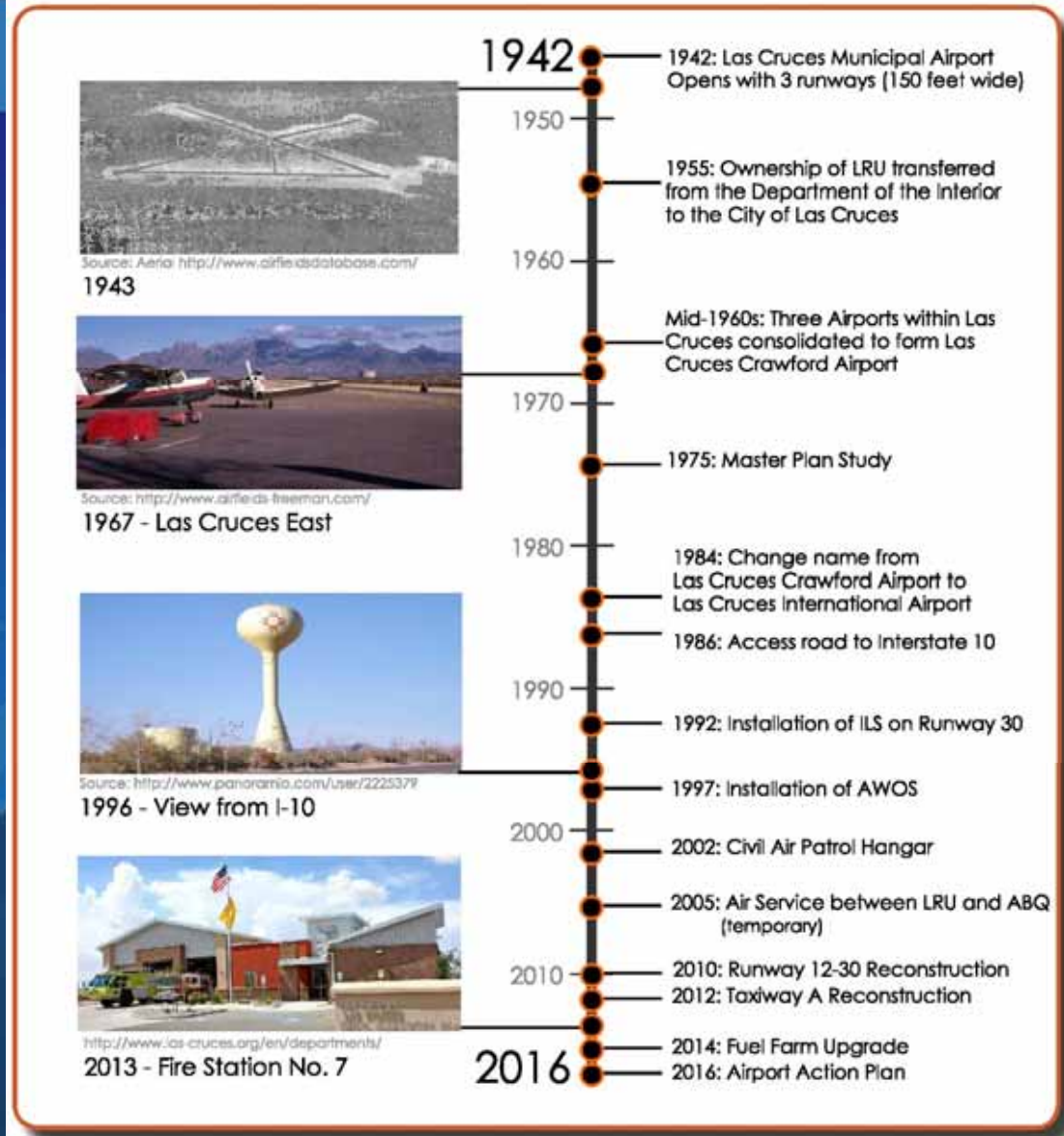
Outline

- Layout and History
- Fun Facts
- Priorities and Critical Needs
- Upcoming!



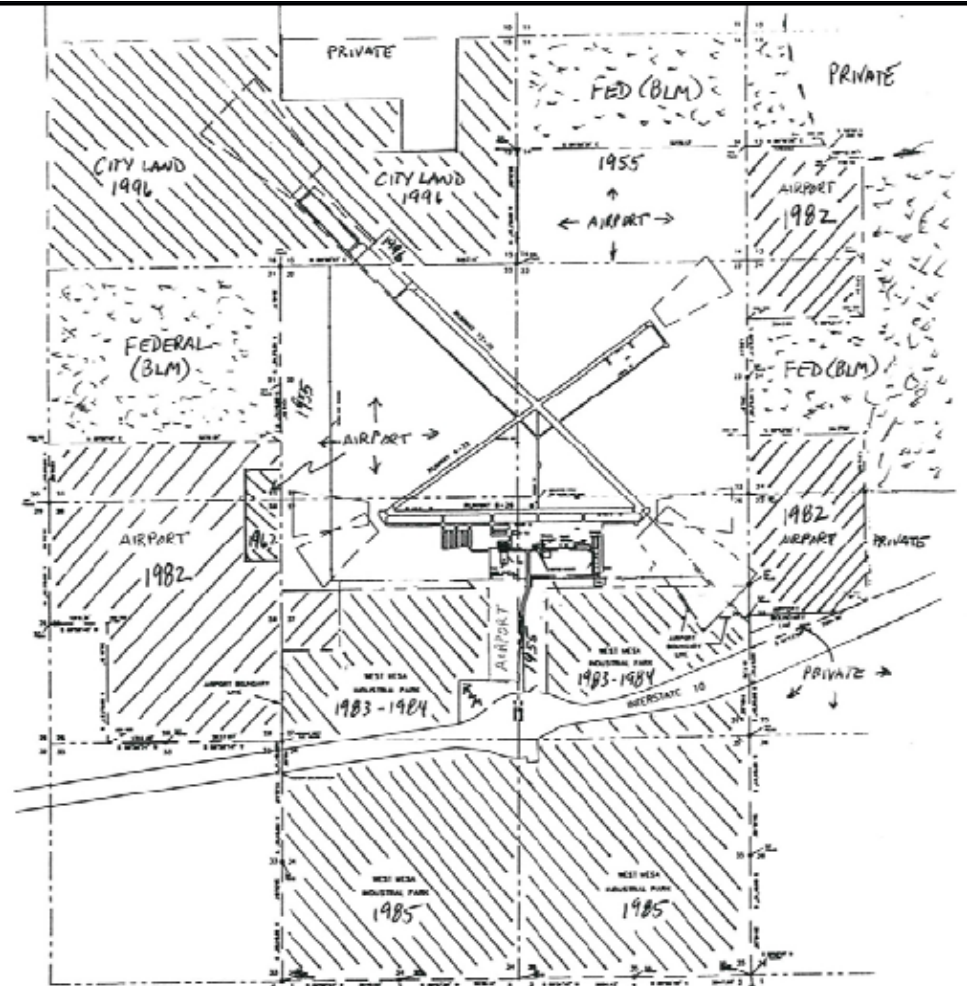
Airport History at a Glance

- 2018: Adopted current Action Plan
- 2019: Kicked off extensive pavement maintenance and rehabilitation projects
- 2020: Completed perimeter fence and security gates replacement
- 2021: Completed terminal apron reconstruction



Airport Fun Facts

- Size in 1955: 2,180 acres
- Additional land set aside to protect encroachment: ~2,410 acres
- Airport Overlay Zone helps protect airspace
- Your weather report comes from LRU



AIRPORT PATENTS: 1955, Dept. of Interior
1962, Dept. of Interior
1982, BLM

WEST MESA IND. P.K.
Purchased from City of Albuquerque
1983, 1984, 1985

CITY LAND NORTH OF AIRPORT'S
STATE PATENT: 1996

Airport Fun Facts

- Cannot sell airport property without act of Congress; Only lease
- 20 businesses operating at LRU
- LRU is an international airport! Landing Rights Airports (LRA). This designation allows international flights to land with prior permission from U.S. Customs.

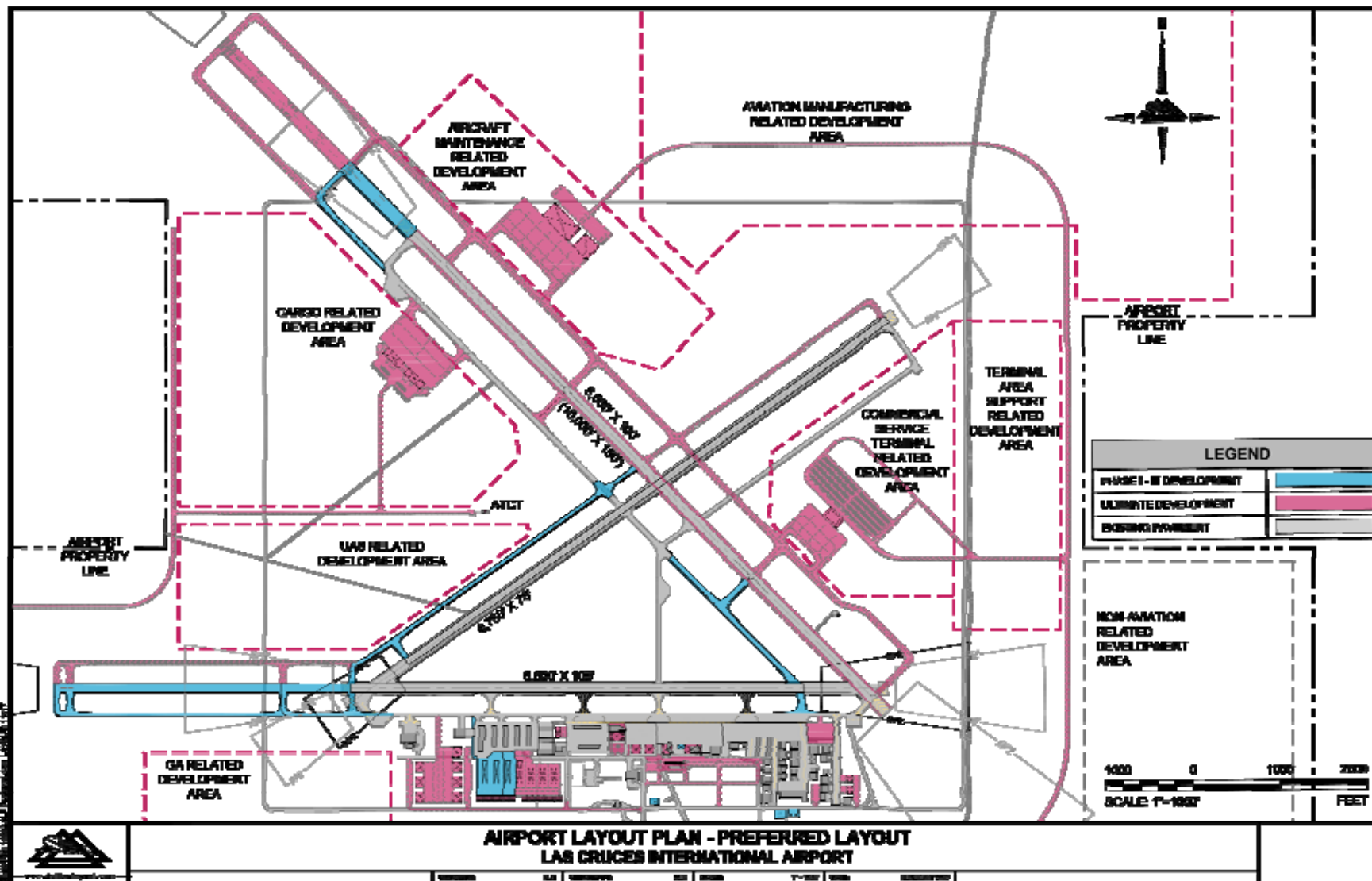


Crucial Airport Priorities

- Safety and security
- Increase activity, vibrancy, economic vitality
 - Open for Business!
- Pavement and facility operations and maintenance
- Attract commercial passenger service provider(s)
- Coordination with innovation and industrial park goals

Critical Needs

- Hangars, hangars, hangars
- Infrastructure expansion: taxi lanes, utilities, broadband
- Extensions for Runways 8-26 and 12-30
- Terminal renovations, expansion for passenger air service
- Fuel farm expansion
- Airport and fire fighting equipment



Upcoming!

- August 2021 – Airport Master Plan update kickoff
- September 25, 2021 – Wings n Wheels Fest 2021, 9 am – 4 pm

