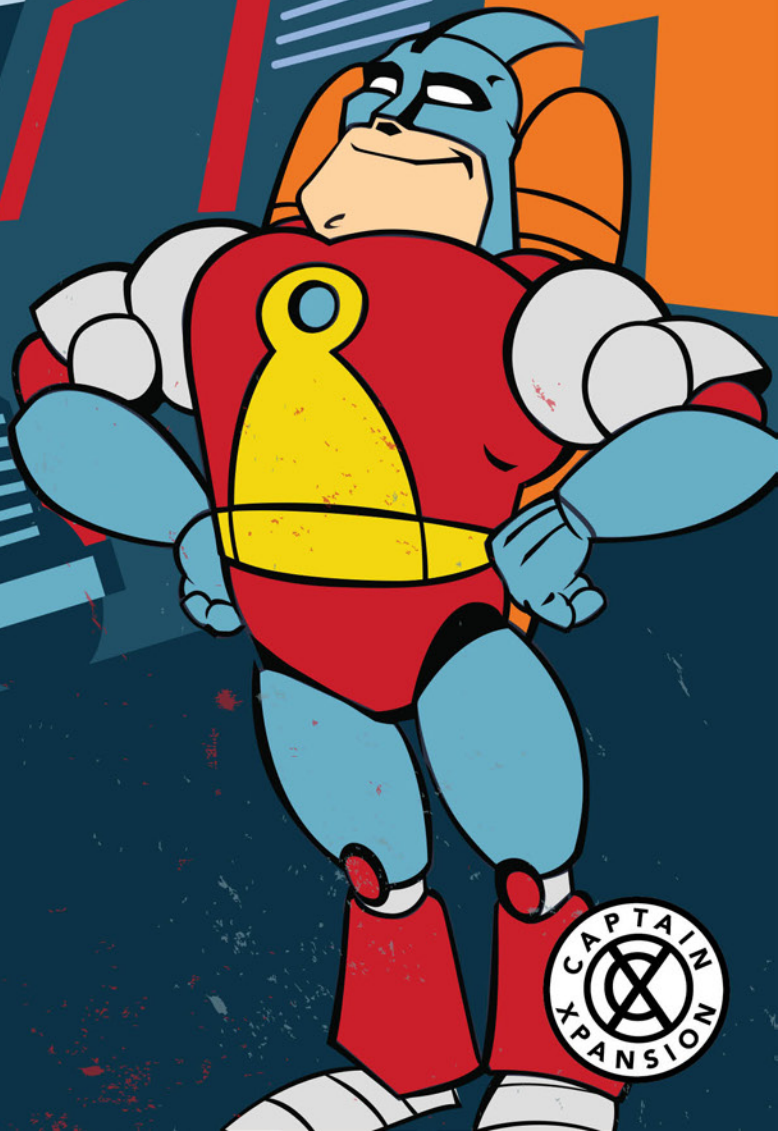


**AMAZING MANUFACTURING
& LOGISTICS ADVANTAGES AT THE ...
NM BORDERPLEX!**

**CAPTAIN Xpansion
TO THE RESCUE!**



NM BORDERPLEX REGION



MVEDA
nmborderplex.com

All of Doña Ana County
is a designated
FREE-TRADE ZONE!



Mesilla Valley
Transportation



Omega Trucking



Ironhorse



UP



BNSF



HEROIC ACTIONS REQUIRE HEROIC STRATEGY, AND EVEN THOSE WITH SUPER STRENGTHS REQUIRE SUPPORT ON THE GROUND!

Successful companies need a strategy, too – a high-value location that overpowers logistical challenges. Luckily, the New Mexico Borderplex is perfectly positioned to take advantage of multiple modes of transportation and inland port infrastructure that serve domestic and international customers, quickly and reliably.

The New Mexico Borderplex really flexes its muscles within the manufacturing landscape, with nearly 17 percent of all U.S. trade with Mexico flowing through the region's four ports of entry!

AVOID SEAPORT CONGESTION, EMBRACE BORDER TRADE

- Year-round Interstate Highway Access
- East-West Interstate 10, North-South Interstate 25
- Two Class-1 Railroads: Union Pacific & BNSF
- Flexible Foreign Trade Zone
- Six Established Industrial Parks
- Equidistant to Long Beach/LA and Houston Sea Ports
- #1 Exporting Region in New Mexico

EXISTING SUPPLY CHAIN SUPPORT

- Plastics
- Metals
- Corrugation
- Foam
- Textiles
- Wiring

IDEAL LOGISTICS DESTINATION IN THE SOUTHWEST

The New Mexico Borderplex is within one day's drive of over 115 million people, which is approximately 25 percent of the U.S./Mexico population.

SANTA TERESA PORT OF ENTRY

- Easternmost Dry-Crossing Port of Entry on U.S./Mexico Border
- Location of Union Pacific's Largest Intermodal Facility in the U.S.
- 12-mile Overweight Zone
- Site of Master-Planned, Bi-National Community

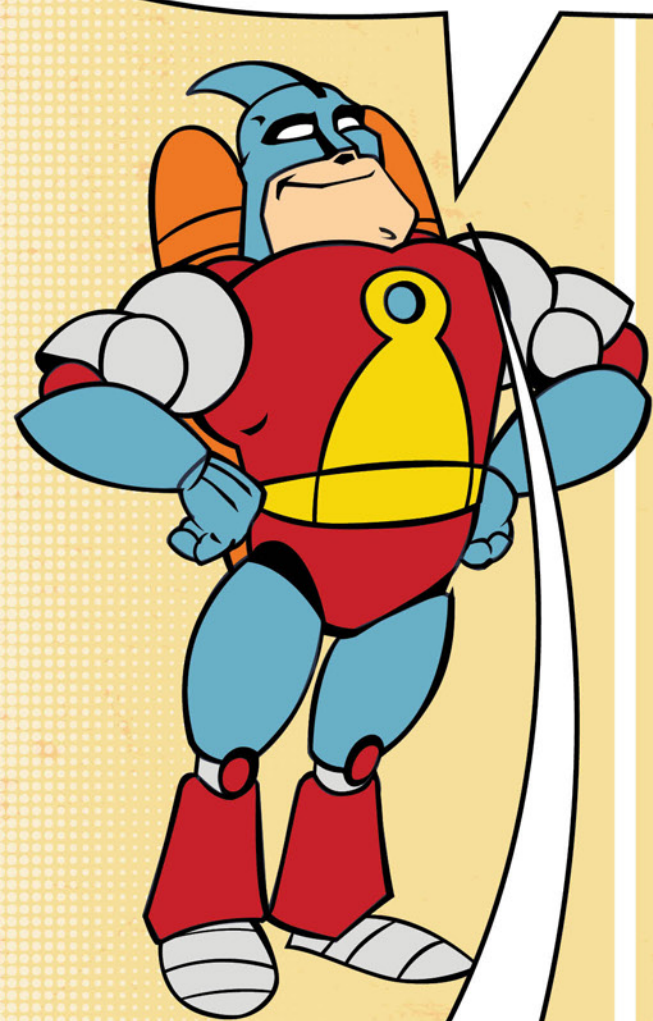
MANUFACTURING

- Named "Best in the West" for Manufacturing by EY
- Seventh-Largest Manufacturing Hub in North America
- 340+ Manufacturing Operations
- Over 270,000 Employed in Manufacturing

FREE-TRADE ZONE

- 2,500+ Established Acres
- Alternative Site Framework Lets Companies Establish an FTZ Anywhere Within the 3,800 Square Miles of Doña Ana County
- Cost Savings on Tariffs, Destruction of Goods, Waived Customs Duties on Inter-Zone Transfers, and more

THE NEW MEXICO BORDERPLEX HAS HEROIC ADVANTAGES!



- ***YEAR-ROUND OPPORTUNITIES*** for manufacturing and logistics with great highway, rail, and air transportation infrastructure
- ***A YOUNG AND GROWING REGIONAL LABOR FORCE*** with average commute times of less than 30 minutes
- ***WORLD-CLASS EDUCATION AND TRAINING*** offered through multiple major university systems and community colleges
- ***LOWER OVERALL BUSINESS COSTS*** due to competitive labor and tax advantages
- ***COMPETITIVE INCENTIVES AND TAX CREDITS*** for business expansion which can be augmented by Local Economic Development Act incentives in a number of areas
- ***AN EFFECTIVE MIX OF BUSINESS & RESEARCH PARKS***, industrial parks, existing buildings, and abundant land ready for development
- ***A MILD YEAR-ROUND CLIMATE*** with an average of 340 days of sunshine, low humidity, and rare inclement weather

***READY TO
TAKE YOUR
MANUFACTURING AND
LOGISTICS UP, UP,
AND AWAY TO THE
NEXT LEVEL? THE NEW
MEXICO BORDERPLEX
IS THE RIGHT SPACE
FOR YOUR BUSINESS!***

800-523-6833
www.NMBorderplex.com



***THE SUPER-POWER
COST-COMPETITIVE EDGE!***