

# WESTPARK LOGISTICS CENTER

U.S.—Mexico Borderplex Region | Santa Teresa, New Mexico

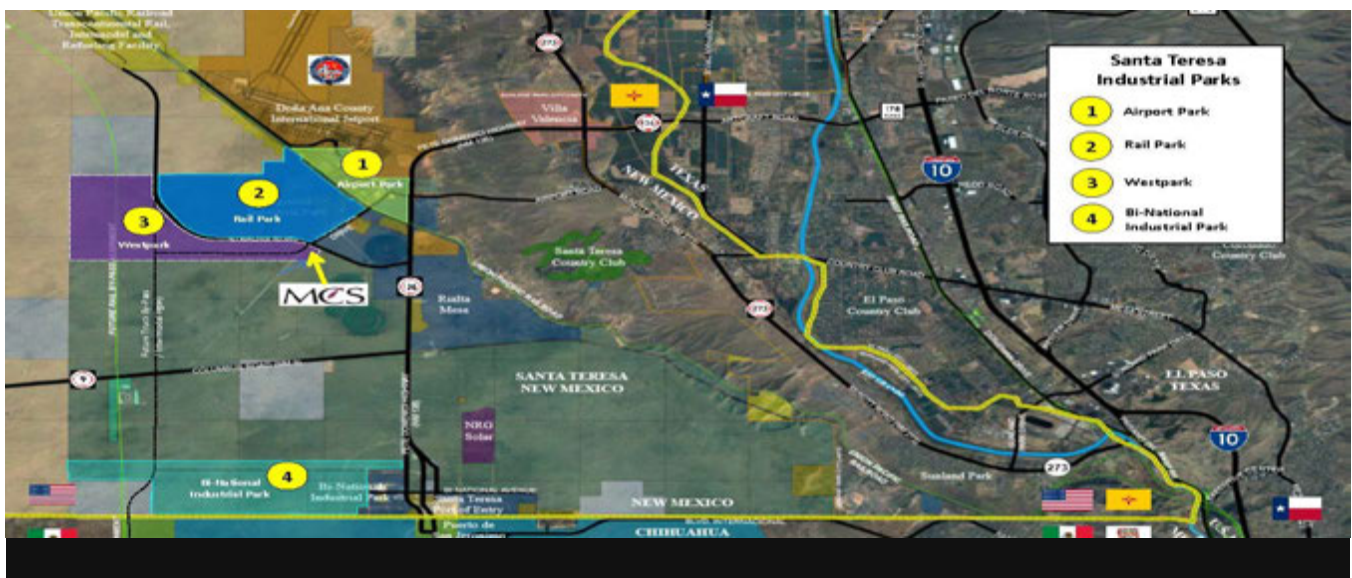
## Advantages of Westpark

Westpark Logistics Center is the newest industrial park to form in one of the fastest growing industrial areas of New Mexico. This park is a 166 acre park will be one of the largest industrial parks in New Mexico – and the closest to Union Pacific's intermodal facility – Westpark's first tenant will be MCS Industries, a U.S. picture frame manufacturer.

### Why Santa Teresa

- **Overweight Freight Zone:** 12 mile zone allows trucks entering from or into Mexico to carry up to 96,000 pounds of cargo instead of the normal 80,000 pounds.
- The Santa Teresa Port of Entry directly connects the United States with the State of Chihuahua, Mexico.
- Equidistant between the ports of Houston and Port of Los Angeles.
- Bi-National Community Master Plan encompassing 40,000 acres was prepared by regional land owners and endorsed by the governors of New Mexico and Chihuahua.
- Foreign Trade Zone Status.

*Westpark  
Logistics  
Center will be  
the largest  
industrial park  
in New  
Mexico*





# Westpark Logistics Center

Santa Teresa, New Mexico



To Port of LA/Long Beach  
UP Sunset Route Speedway



Santa Teresa  
Terminal  
Office Complex



Future Rail Spur to San Jeronimo Industrial Park

Future West Truck By-Pass

**Westpark  
Logistics Center**  
(future phases)

Industrial Avenue extension (2015)

Proposed 40-acre Site



Strauss Road

Union Pacific  
Santa Teresa  
Intermodal Facility



Dona Ana County  
International  
Jetport

**Santa Teresa  
Rail Park**

Santa Teresa Southern Railroad

Stagecoach  
Trucking

ERO  
Services

Omega  
Trucking

Stagecoach  
Trucking

Ironhorse  
Tranload facility

J.H. Rose

Monarch  
Litho

Industrial Road

Trans-Maritime

Twin Cities  
Services

CommScope

**Airport Park**

CN Wire

Acme Mills  
Erickson Metals

Northwire  
International

Wire  
Southwest

Steel Coil

Georgia  
Pacific

Foamex

GiazTech

Union Pacific Railroad Main Line

Strauss Road

Pete V. Domenici Highway



(7 miles)



Santa Teresa  
Port of Entry  
(4 miles)



**Parcel Line Table**

Line #	Length	Direction
L1	30.82	S58° 42' 08"E
L2	20.03	N31° 15' 10"E
L3	69.05	S50° 34' 47"E
L4	200.30	S50° 00' 41"E
L5	214.12	S41° 15' 00"W
L6	132.47	S43° 15' 24"W
L8	400.00	N43° 15' 24"E

**Lot Data:**

Lot	Area (ac.)	Area (SQ. FT.)
LOT 8	15.71	684,400
LOT 9	31.42	1,368,800
LOT 10	15.33	667,794
LOT 11	13.78	600,305
LOT 12	8.21	357,697
LOT 1	10.71	464,582
LOT 2a	16.85	733,845
LOT 3a	24.39	1,062,255
LOT 4a	14.38	626,208
LOT 5a	15.45	672,800
LOT 6a	15.45	672,800
LOT 7a	15.33	667,797

**Proposed 40.00-acre Site\***

**38.73-acre Site\***

**DETAIL 1**  
SCALE 1" = 20'

**For Discussion Purposes Only**

**\* Lot size subject to subdivision replat**



Strauss Road.



Industrial Ave.







